

2007 NWT Social Indicators

- Detah -

This document represents the results of a GNWT inter-departmental working group to identify a set of social indicators that could be used to describe and monitor social conditions in NWT communities. The data provided on the following pages presents the information for these indicators for Detah, the NWT and Canada when ever possible.

List of social indicators:

1. Incidence of Heavy Alcohol Use
2. Death Rates From Accidents, Suicides and Homicides
3. Sexually Transmitted Infection Rate (3 Year Average)
4. Percent of Population 15 Years and Older with at Least High School
5. High School Graduation Rate

6. Violent Crime Rate by Detachment
7. a) Rate of Juvenile Crime by Detachment (Males, 3 Year Average)
b) Rate of Juvenile Crime by Detachment (Females, 3 Year Average)
8. NWT Shelter Admissions
9. Percent of Households in Core Housing Need
10. Percent of Households with 6 or More Persons

11. Percent of Lone Parent Families
12. Children Living in Low Income
13. Child Protection Investigations
14. a) Population Dependency Ratio (Less than 15 Years of Age)
b) Population Dependency Ratio (60 Years of Age and Over)
15. Population Mobility

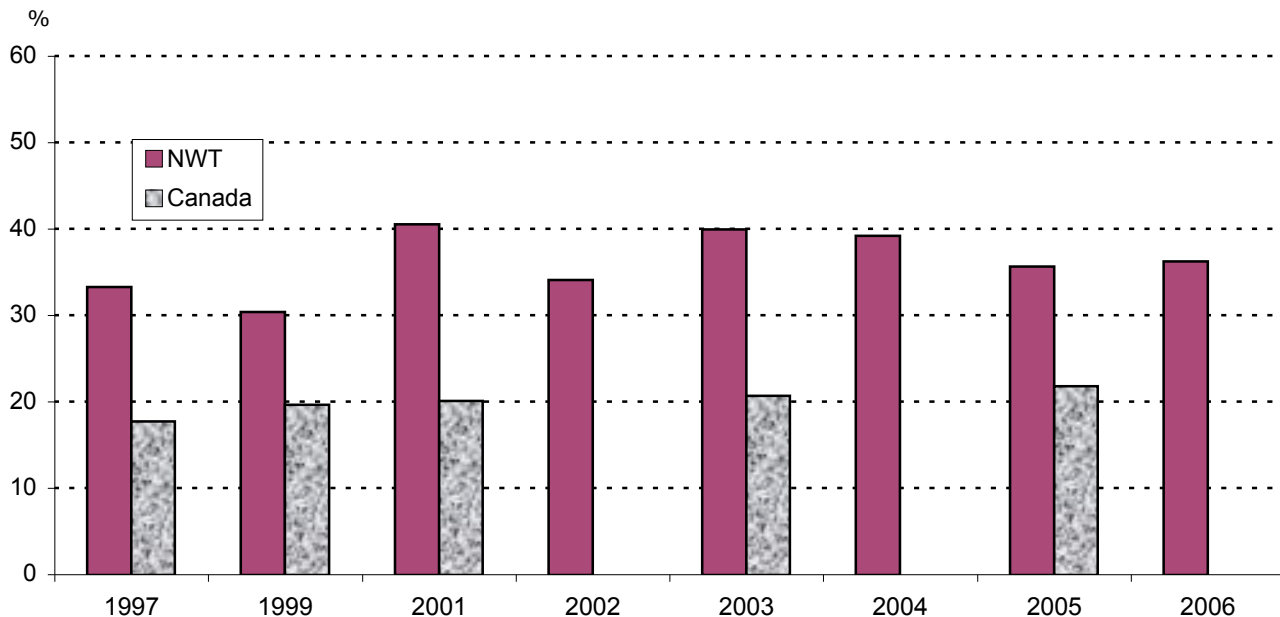
16. Average Employment Income
17. a) Percentage of Families with Income Less Than \$30,000
b) Percentage of Families with Income Greater Than \$75,000
18. Employment Rate
19. Percent of Aboriginal People 15 Years and Over Able to Speak an Aboriginal Language
20. Use of Harvested Meat and Fish

These indicators will be maintained and published on an annual basis, and are available to all user groups to use in developing and delivering social programs within Detah. The indicators presented here represent only part of the information available for Detah. Other data can be found on the Bureau of Statistics website at www.stats.gov.nt.ca

If you have any comments or questions regarding either the social indicators presented here, or any other data for your community, contact:

Carmelita Hiebert
Statistics Administrator
NWT Bureau of Statistics
(867) 873-7147
Fax: (867) 873-0275

1. Incidence of Heavy Alcohol Use* NWT and Canada, 1997 – 2006

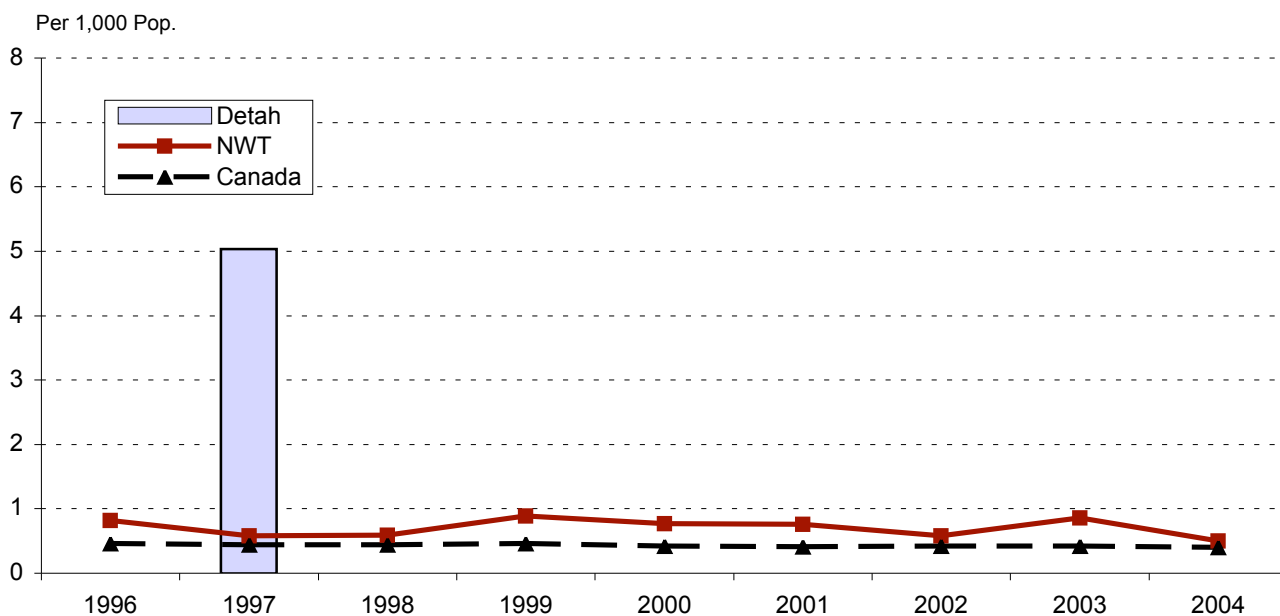


*Percentage of persons 12 years of age and over who drink 5 or more drinks per occasion more than once a month

Note: Community rates are not available

Source: Statistics Canada

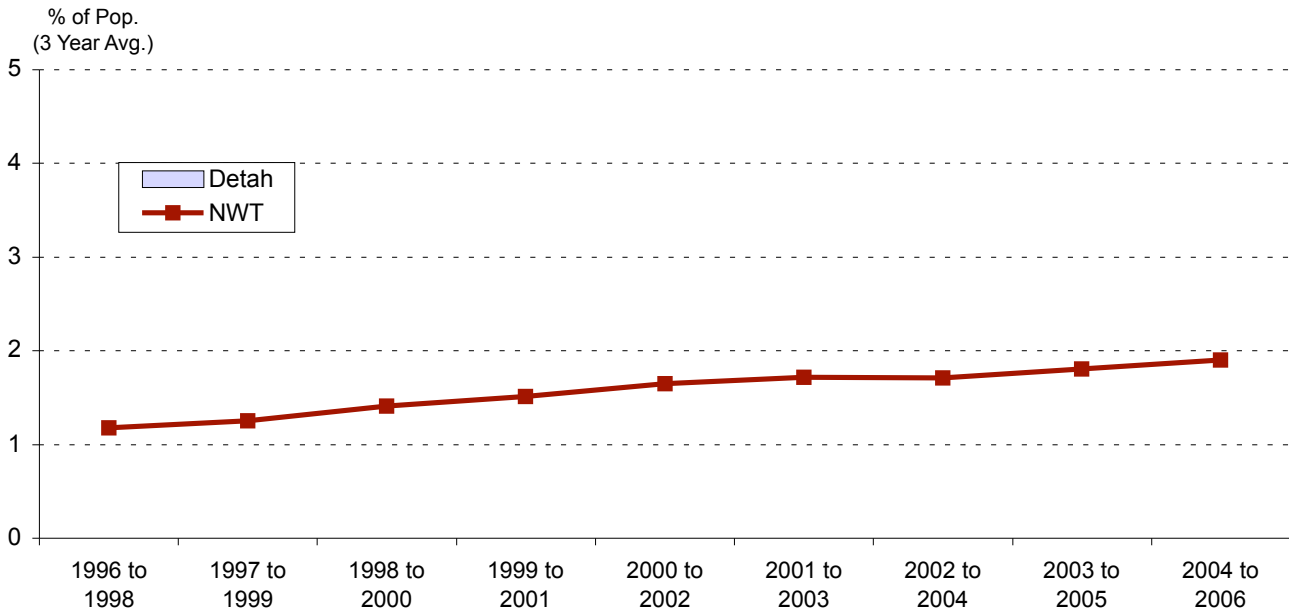
2. Death Rate from Accidents, Suicides and Homicides Detah, NWT and Canada, 1996 – 2004



Note: Detah rates during 1996, and 1998 to 2004 are 0

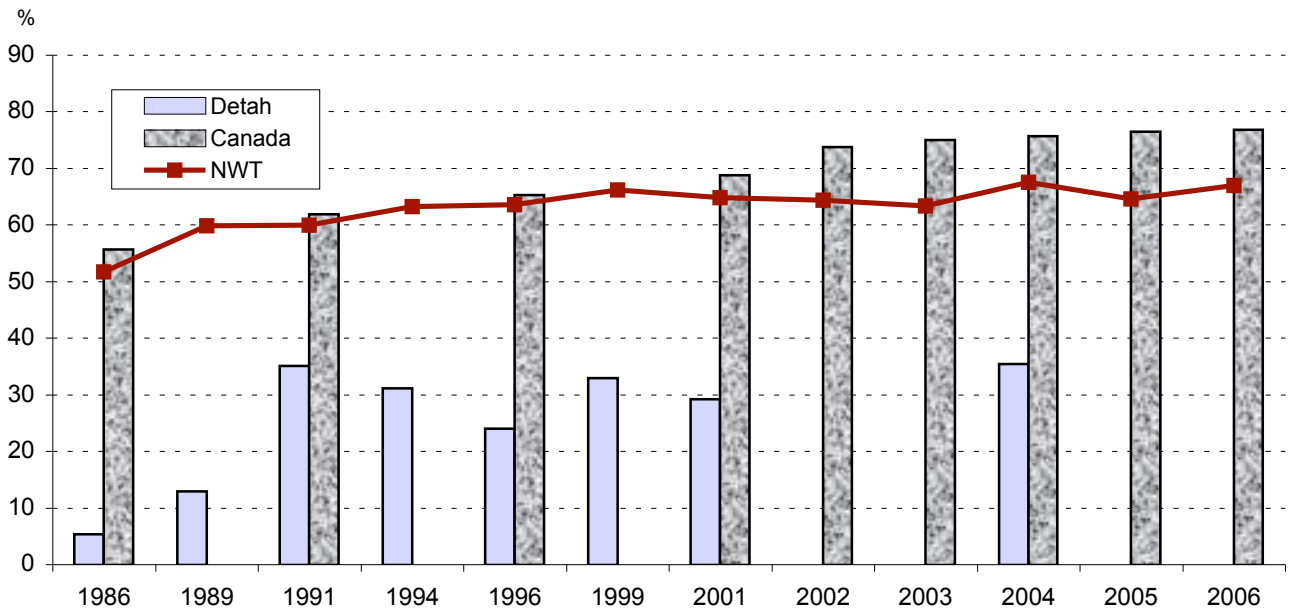
Source: Statistics Canada

3. Sexually Transmitted Infection Rate (3 Year Average)* Detah and NWT, 1996-98 – 2004-06



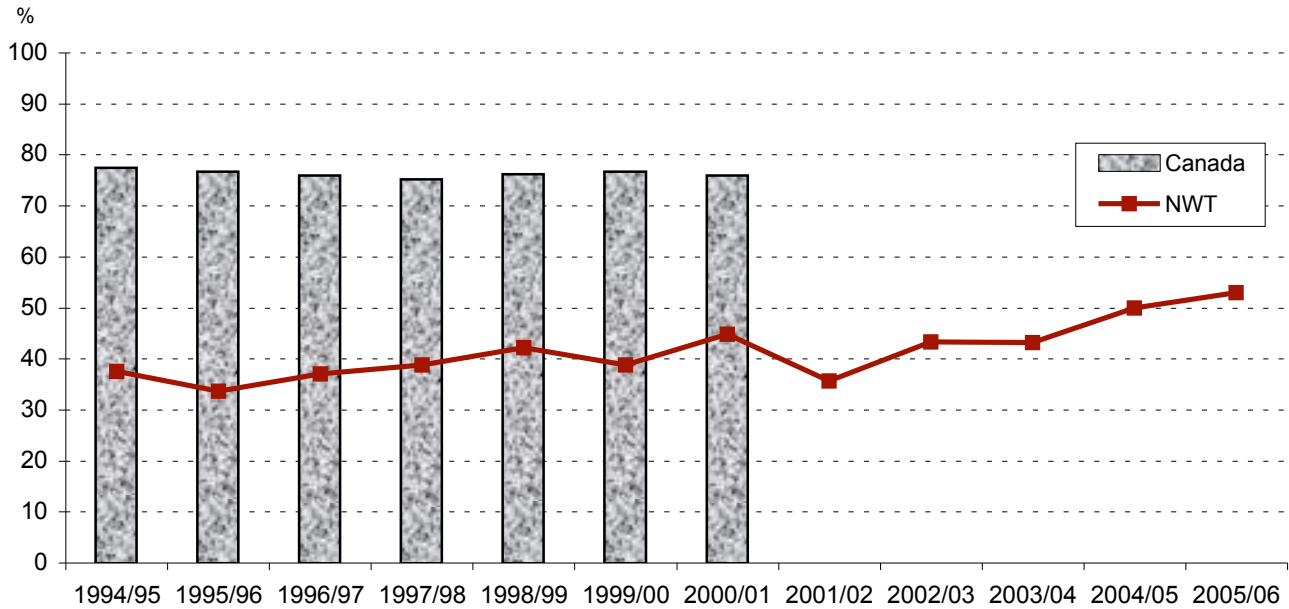
*Reported cases of chlamydia and gonorrhoea per 100 population
 Note: Detah rates during 1996 to 2006 are 0; Canadian data are not available
 Source: NWT Health & Social Services

4. Percent of Population 15 Years and Older with at Least High School Detah, NWT and Canada, 1986 – 2006



Note: Canadian data are not available for 1989, 1994, 1999 and 2004
 Source: 1989, 1994 and 1999 - NWT Labour Force Survey; 2004 - NWT Community Survey; 1991, 1996 and 2001 – Census; 2002, 2003 2005 & 2006 annual LFS

5. High School Graduation Rate* NWT and Canada, 1994/95 – 2005/06

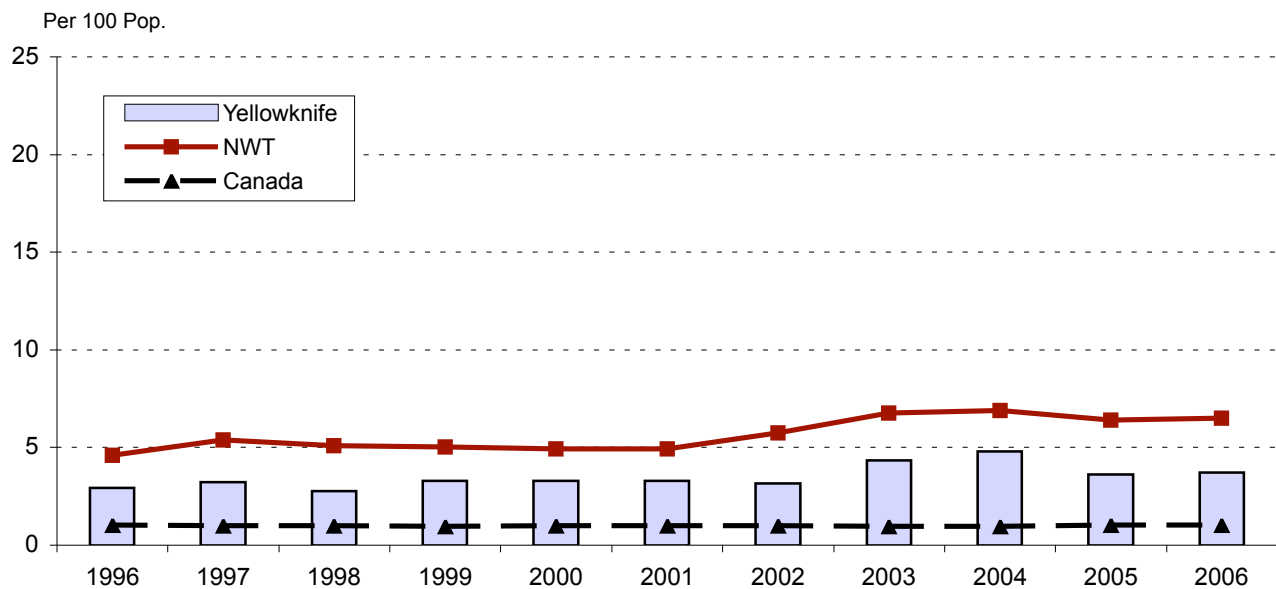


*High school graduates as a percentage of persons 18 years of age

Note: Community data are not available; 2000/01 last data available for Canada

Source: NWT data – NWT Education, Culture & Employment; Canadian data – Statistics Canada

6. Violent Crime Rate by Detachment* Yellowknife**, NWT and Canada, 1996 – 2006



*Number of reported violent crimes per 100 population.

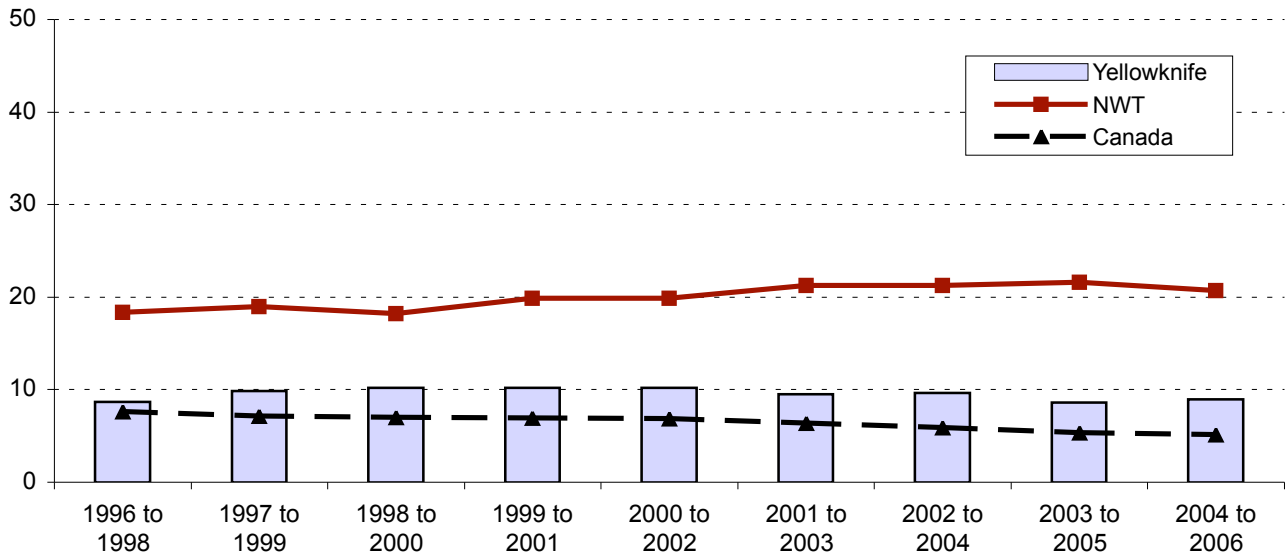
** Crime for Detach is based out of the Yellowknife detachment

Note: Incidents in a particular detachment may include incidents from surrounding communities

Source: Statistics Canada.

**7a. Rate of Juvenile Crime by Detachment (Males, 3 Year Average)*
Yellowknife**, NWT and Canada, 1996-98 – 2004-06**

Per 100 Male Youths.



*Number of male youths (between 12 and 17 years of age) charged with a crime per 100 male youth

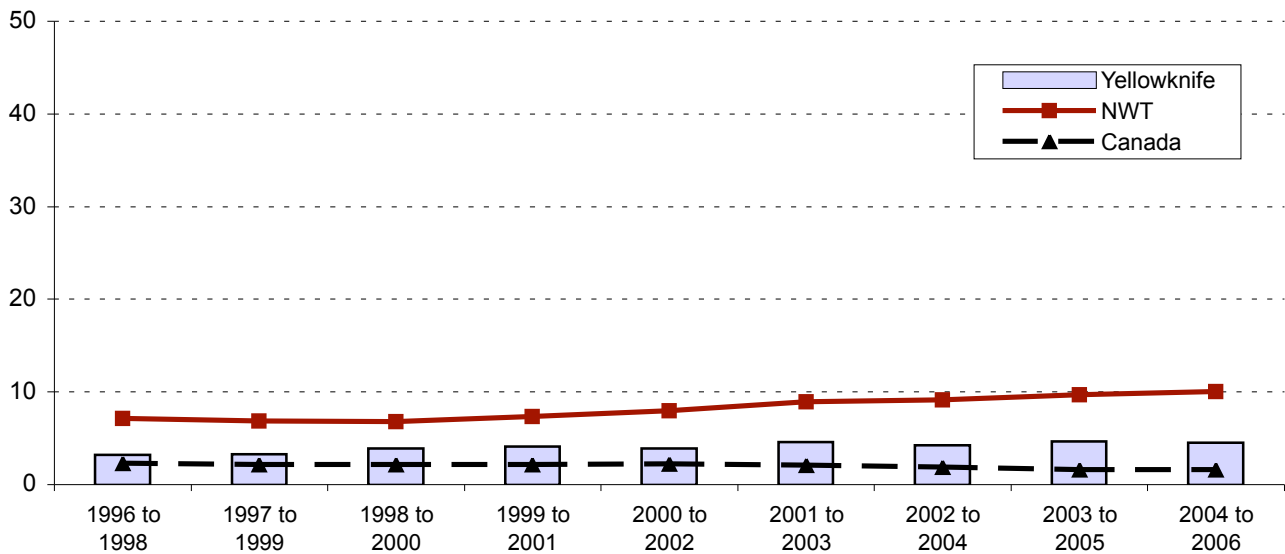
** Crime for Detach is based out of the Yellowknife detachment

Note: Incidents in a particular detachment may include incidents from surrounding communities

Source: Statistics Canada

**7b. Rate of Juvenile Crime by Detachment (Females, 3 Year Average)*
Yellowknife**, NWT and Canada, 1996-98 – 2004-06**

Per 100 Female Youths



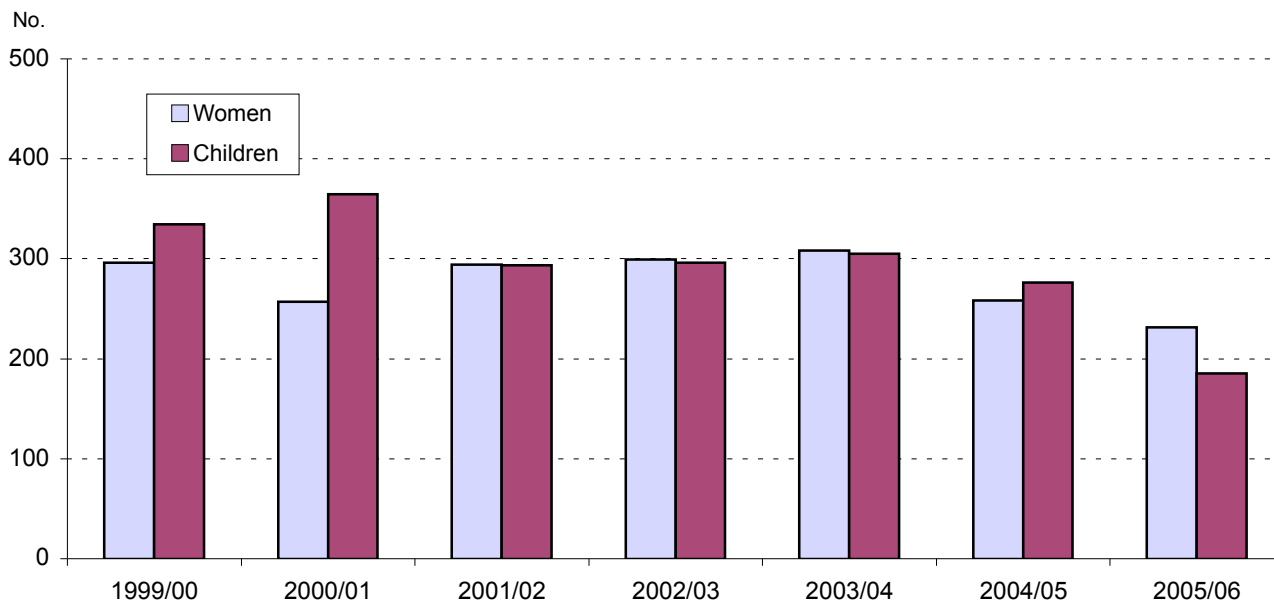
*Number of female youths (between 12 and 17 years of age) charged with a crime per 100 female youth

** Crime for Detach is based out of the Yellowknife detachment

Note: Incidents in a particular detachment may include incidents from surrounding communities

Source: Statistics Canada

8. NWT Shelter Admissions* Women and Children, 1999/00 – 2005/06

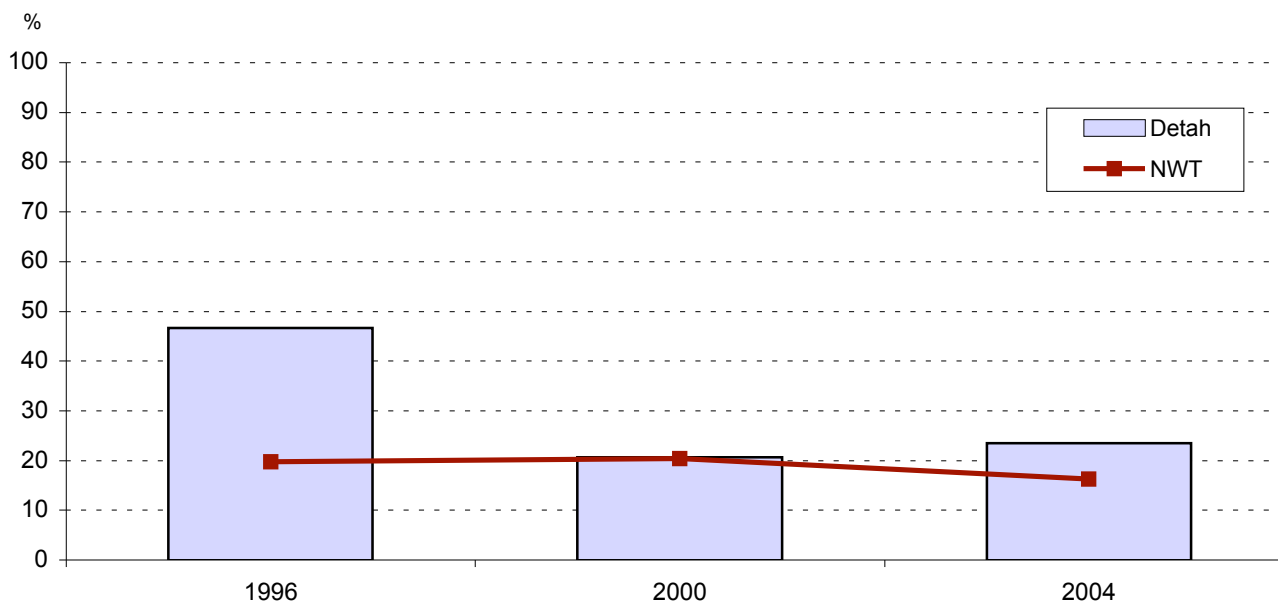


*Number of Women and Children admitted to shelters

Note: Canadian and community data are not available

Source: NWT Health & Social Services

9. Percent of Households in Core Housing Need* Detah and NWT, 1996, 2000 and 2004

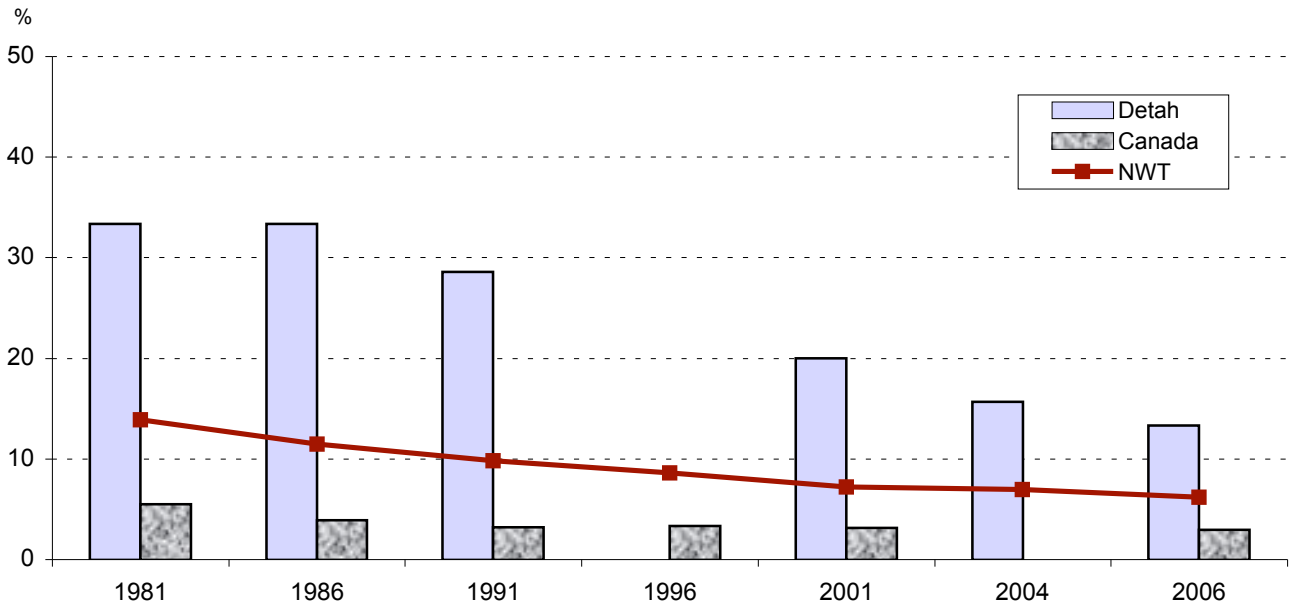


*Core housing need refers to a household that has a housing problem of suitability, adequacy or affordability and does not have the income necessary to correct the problem

Note: Canadian data are not available

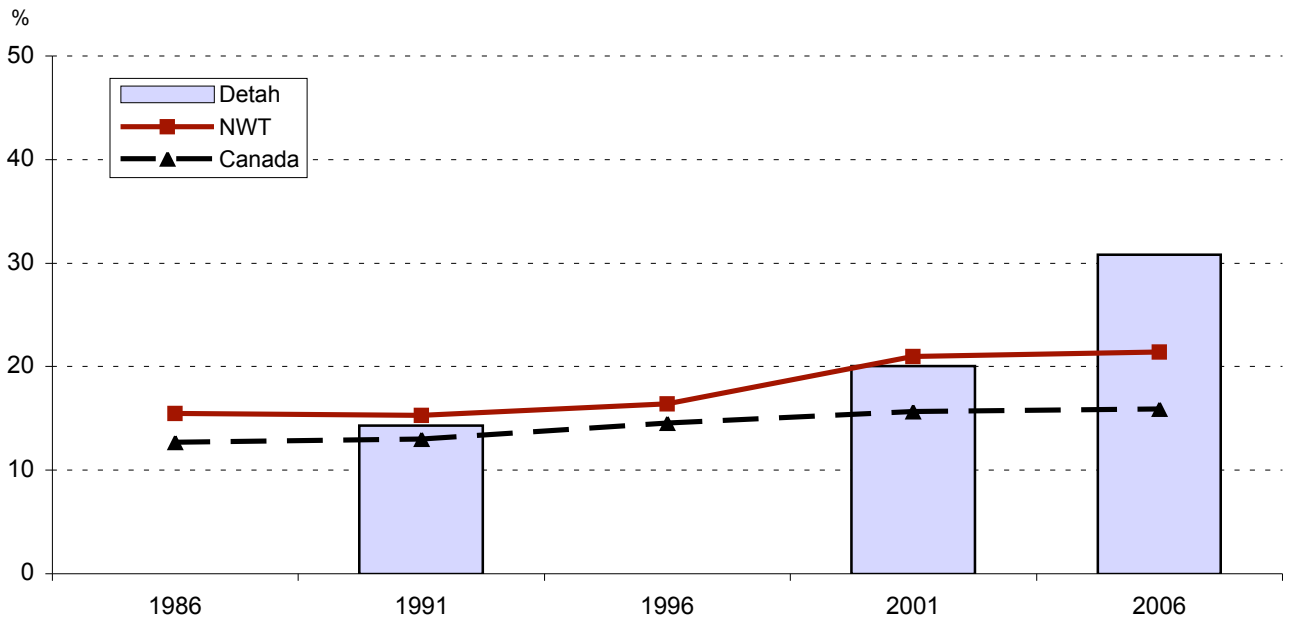
Source: 1996 and 2000 - NWT Housing Needs Survey; 2004 – NWT Community Survey

10. Percent of Households with 6 or More Persons Detah, NWT and Canada, 1981 – 2006



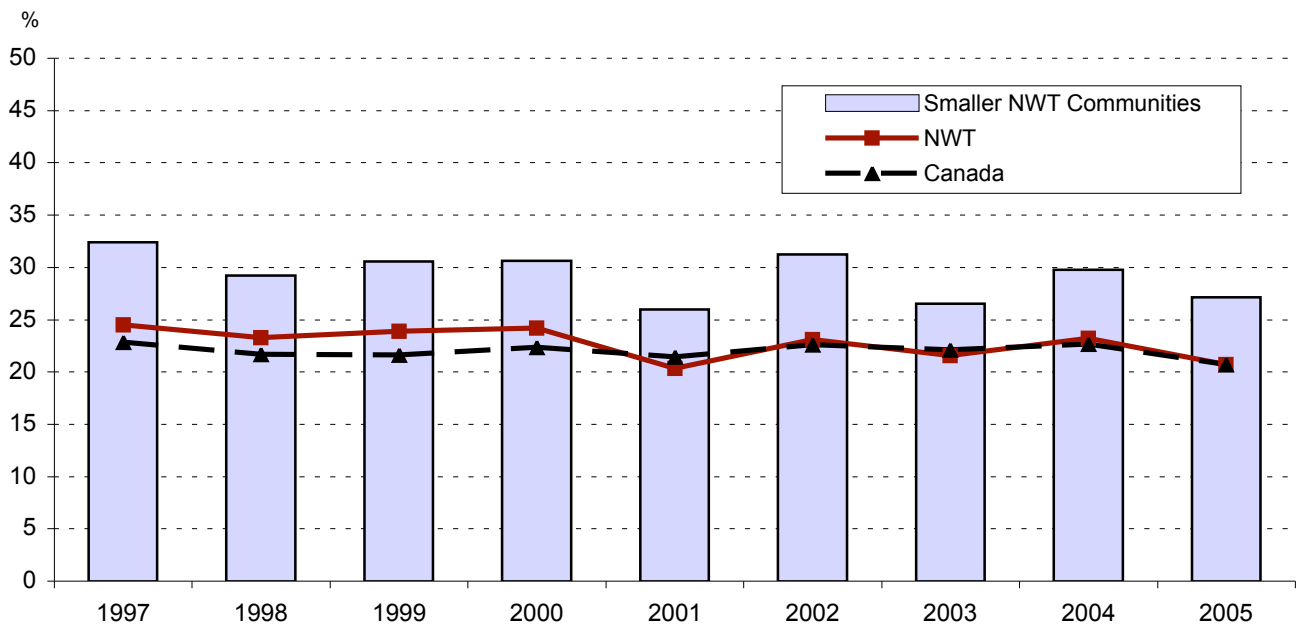
Note: Detah data during 1996 is 0; Canadian data are not available for 2004
 Source: 1981, 1986, 1991, 1996, 2001 and 2006 – Census; 2004 – NWT Community Survey

11. Percentage Lone Parent Families Detah, NWT and Canada, 1986 – 2006



Note: Detah data during 1986 and 1996 is 0
 Source: Census

12. Children Living in Low Income* Smaller NWT Communities**, NWT and Canada, 1997 – 2005

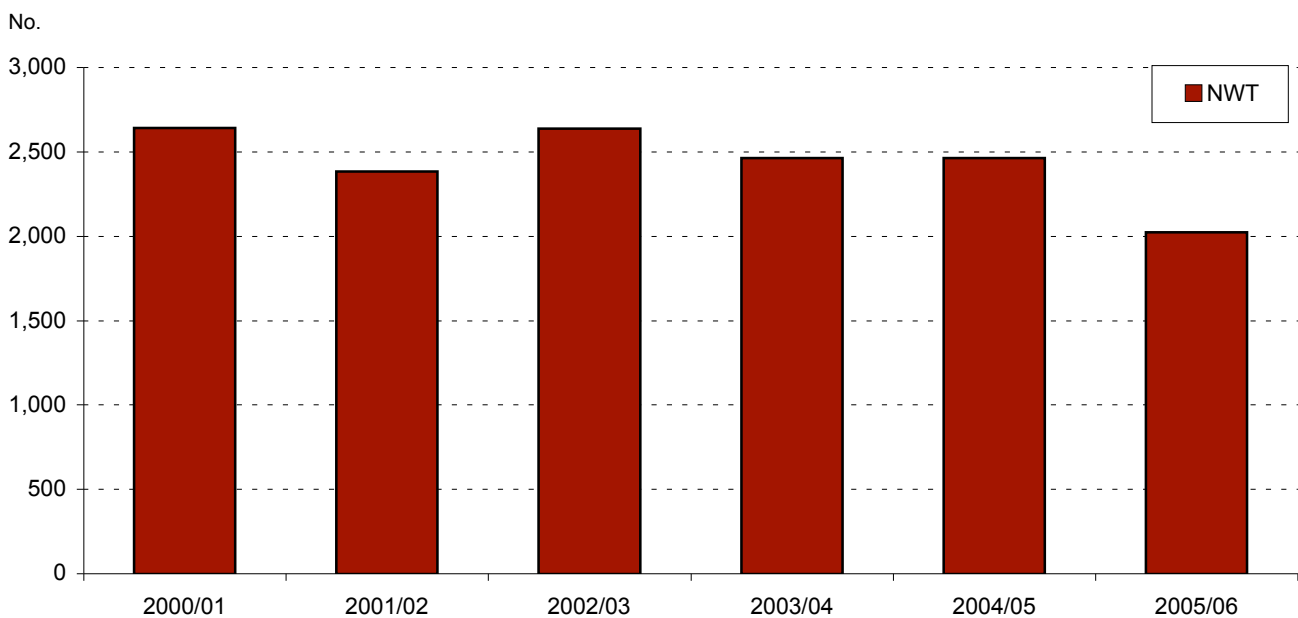


* Percentage of children living in families with income below the after-tax low-income measure

**Detah data is not available; Smaller NWT communities are defined as all NWT communities with a population 700 or less

Source: Statistics Canada

13. Child Protection Investigations* NWT, 2000/01 – 2005/06



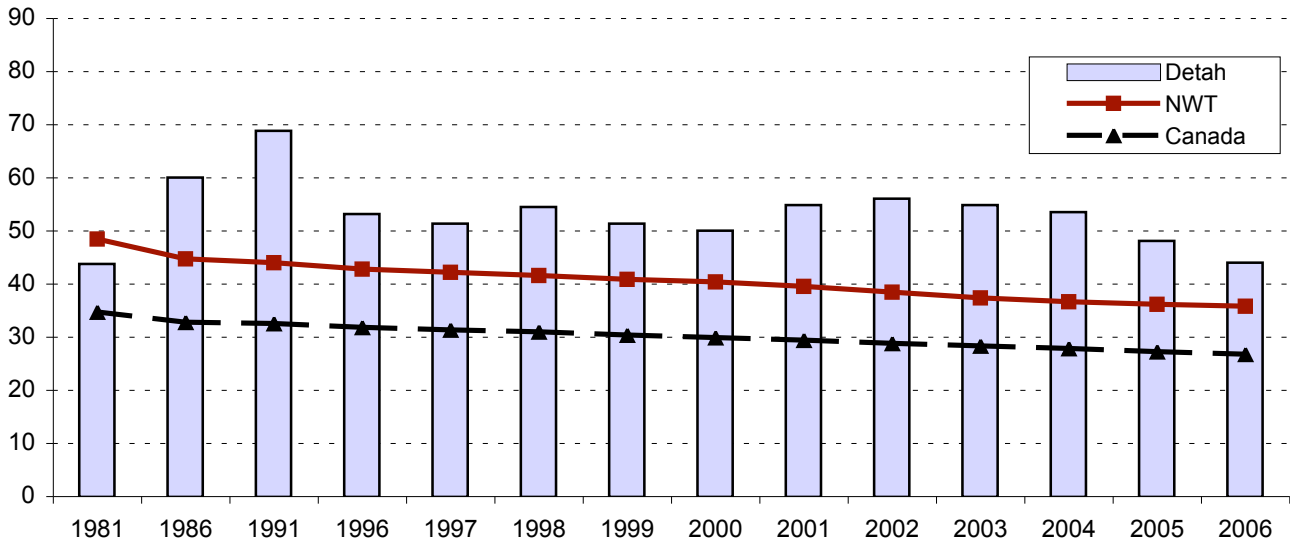
*Number of screening reports; prior to 2002/03 a screening report may not have led to an investigation, that year a procedural change was made so that all screening reports are investigated

Note: Canadian and community level data are not available

Source: NWT Health & Social Services

14a. Population Dependency Ratio (Less than 15 Years of Age)* Detah, NWT and Canada, 1981 – 2006

No. people < 15 years per 100
people between 15 & 59 years

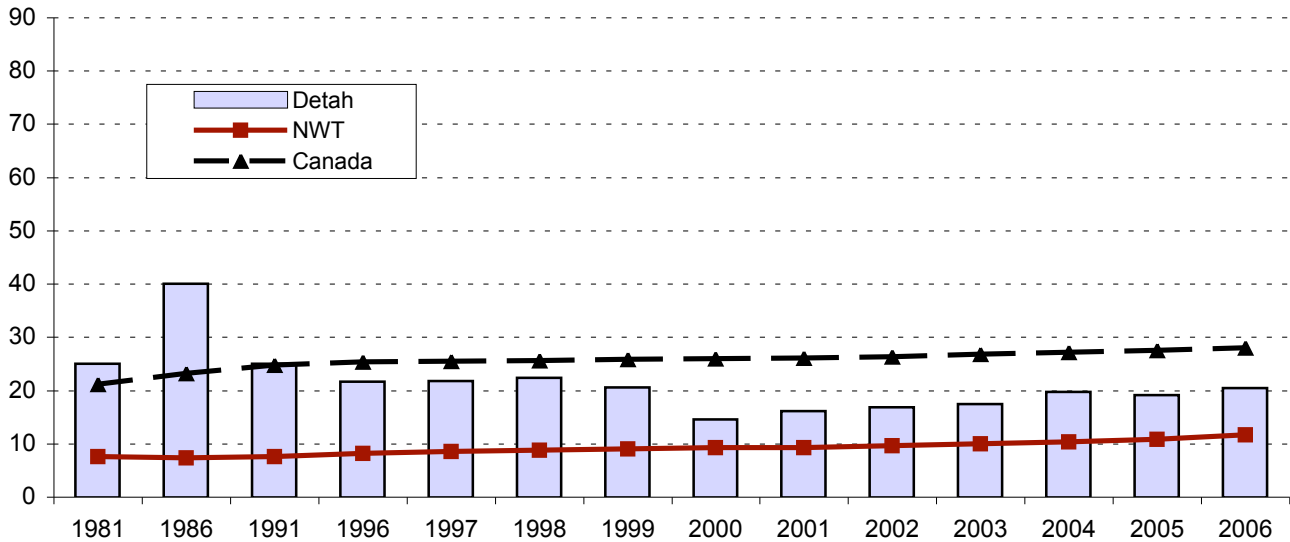


* Number of people less than 15 years old for every 100 people between the ages of 15 and 59

Source: Canadian rates – Statistics Canada; NWT and community rates: NWT Bureau of Statistics (except 1981, 1986 and 1991 – Statistics Canada)

14b. Population Dependency Ratio (60 Years of Age and Over)* Detah, NWT and Canada, 1981 – 2006

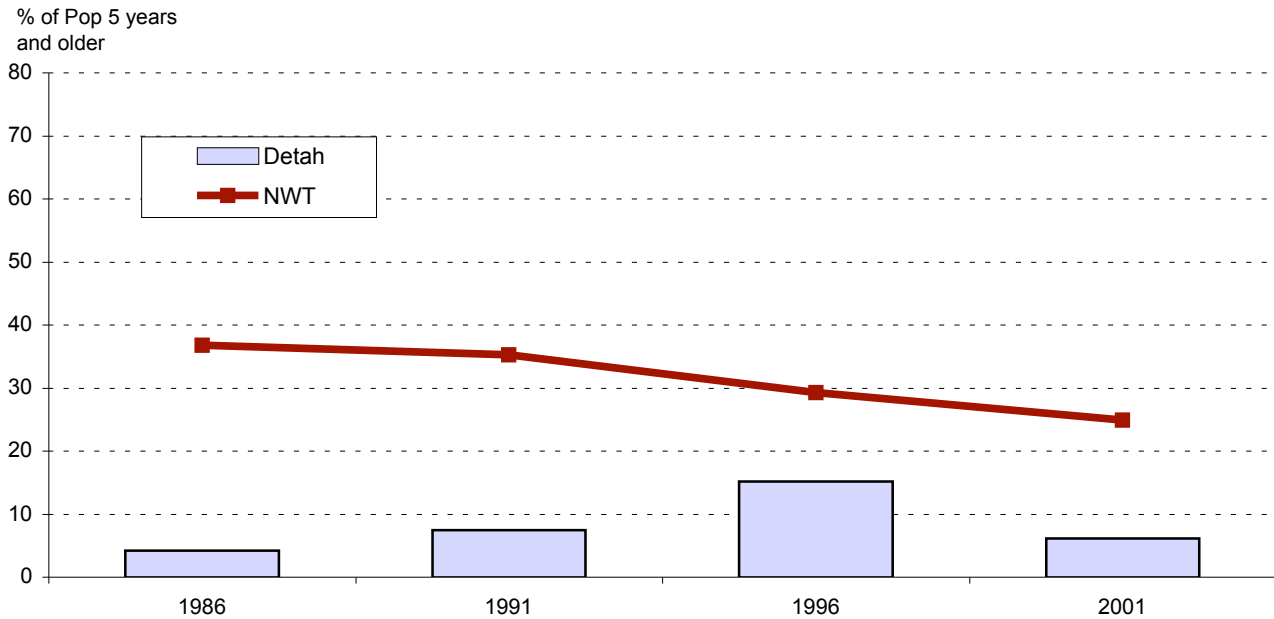
No. people > 59 years per 100
people between 15 & 59 years



* Number of people 60 years and older for every 100 people between the ages of 15 and 59

Source: Canadian rates – Statistics Canada; NWT and community rates: NWT Bureau of Statistics (except 1981, 1986 and 1991 – Statistics Canada)

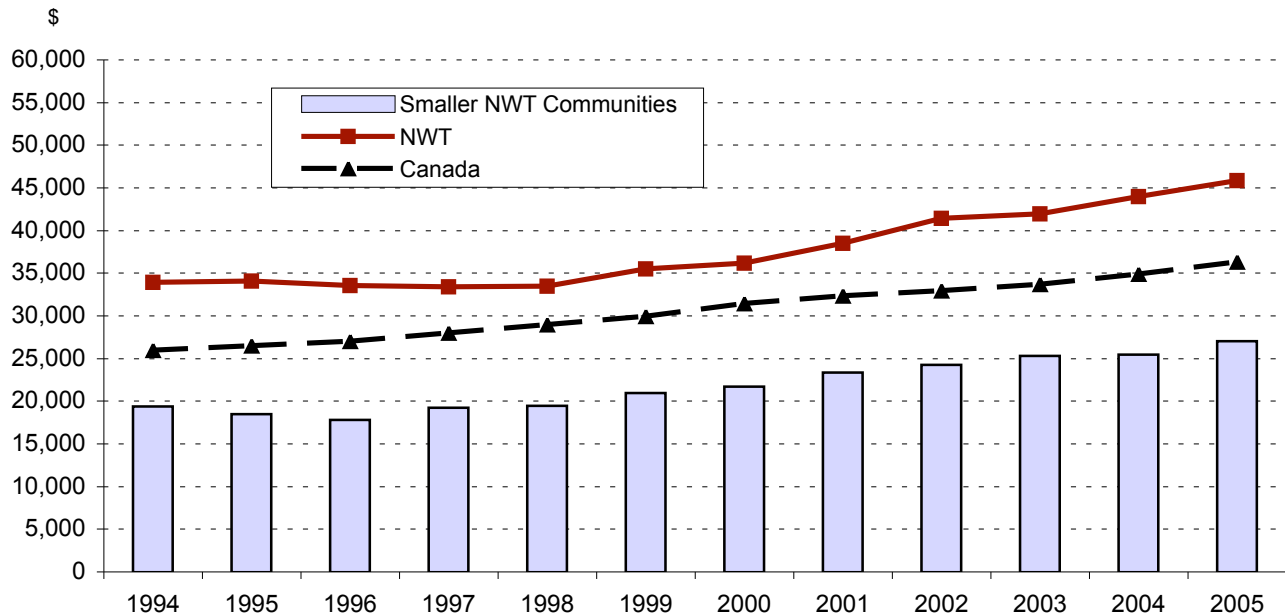
15. Population Mobility* Detah and NWT, 5 Year Mobility Rate – 1986 to 2001



*Detah mobility is the percent of Detah's population 5 years and older who didn't live in the community 5 years earlier; NWT mobility is the percent of NWT's population 5 years and older who didn't live in their current community 5 years earlier

Source: Census

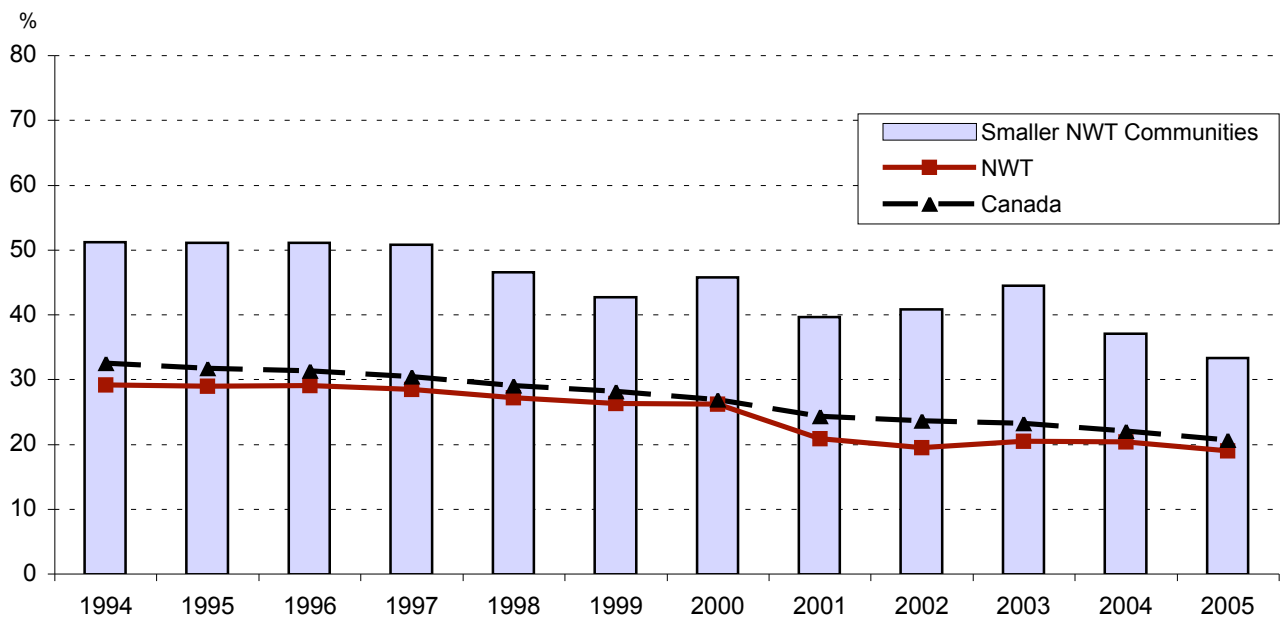
16. Average Employment Income Smaller NWT Communities*, NWT and Canada, 1994 – 2005



*Detah data is not available; Smaller NWT communities are defined as all NWT communities with a population 700 or less

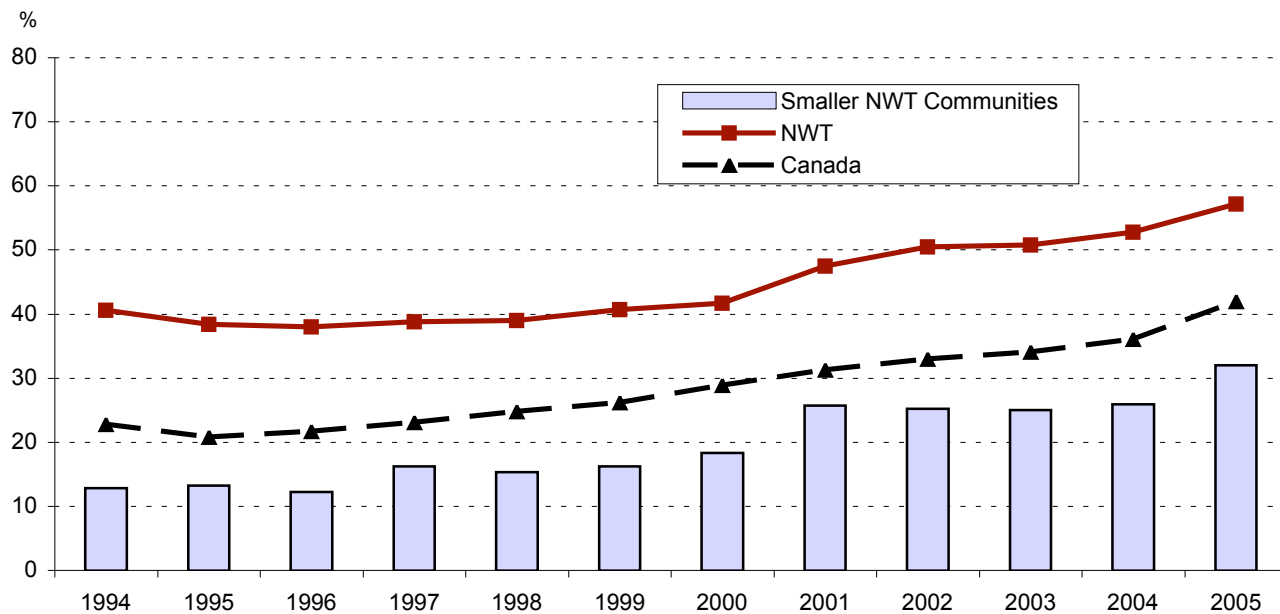
Source: Statistics Canada

**17a. Percentage of Families with Income Less Than \$30,000
Smaller NWT Communities*, NWT and Canada, 1994 – 2005**



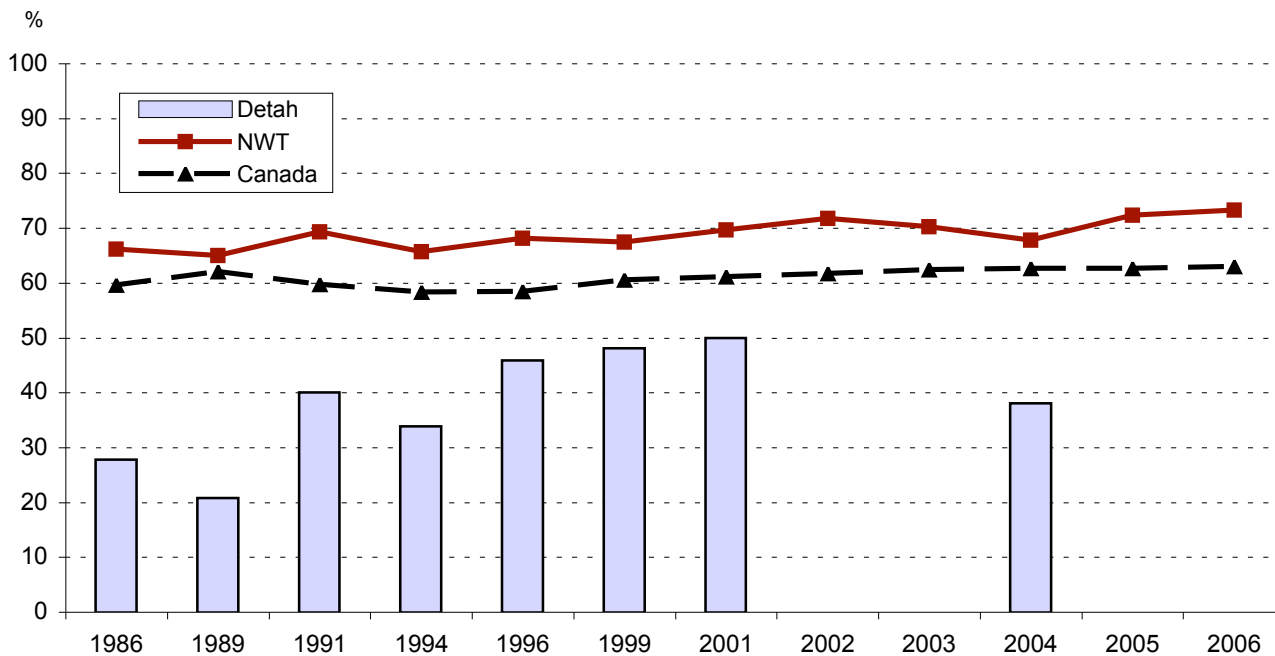
*Detah data is not available; Smaller NWT communities are defined as all NWT communities with a population 700 or less
Source: Statistics Canada

**17b. Percentage of Families with Income Greater Than \$75,000
Smaller NWT Communities*, NWT and Canada, 1994 – 2005**



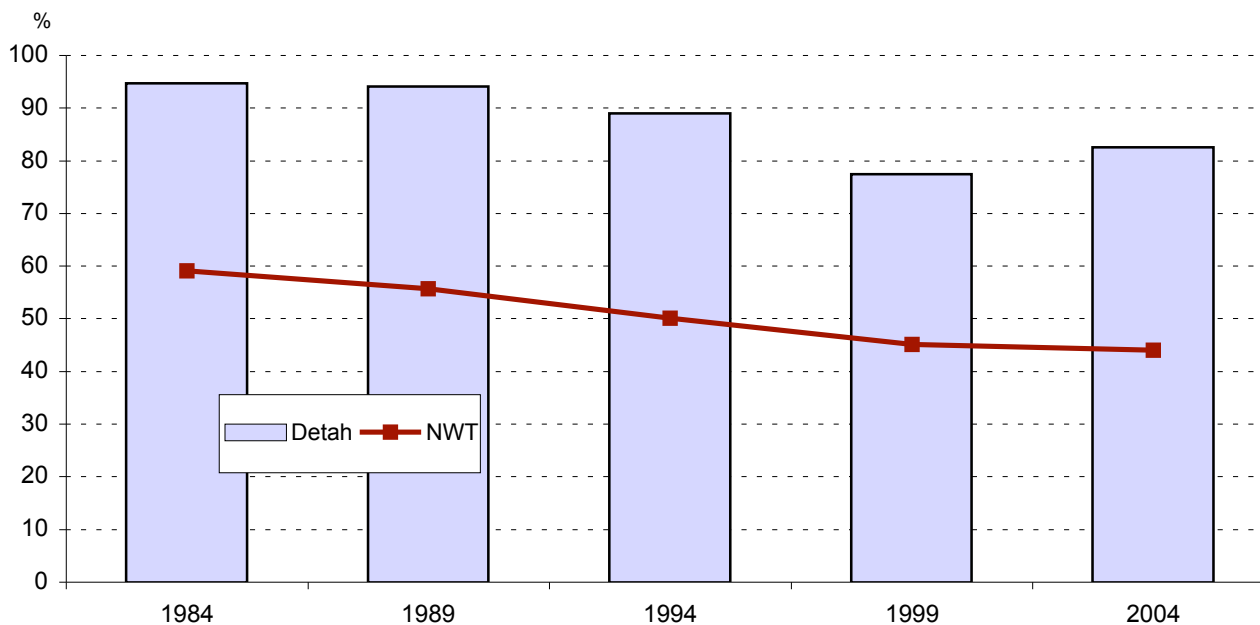
*Detah data is not available; Smaller NWT communities are defined as all NWT communities with a population 700 or less
Source: Statistics Canada

18. Employment Rate Detah, NWT and Canada, 1986 – 2006



Source: Statistics Canada (except NWT and community data for 1989, 1994, and 1999 - NWT Labour Force Survey; 2004 - NWT Community Survey)

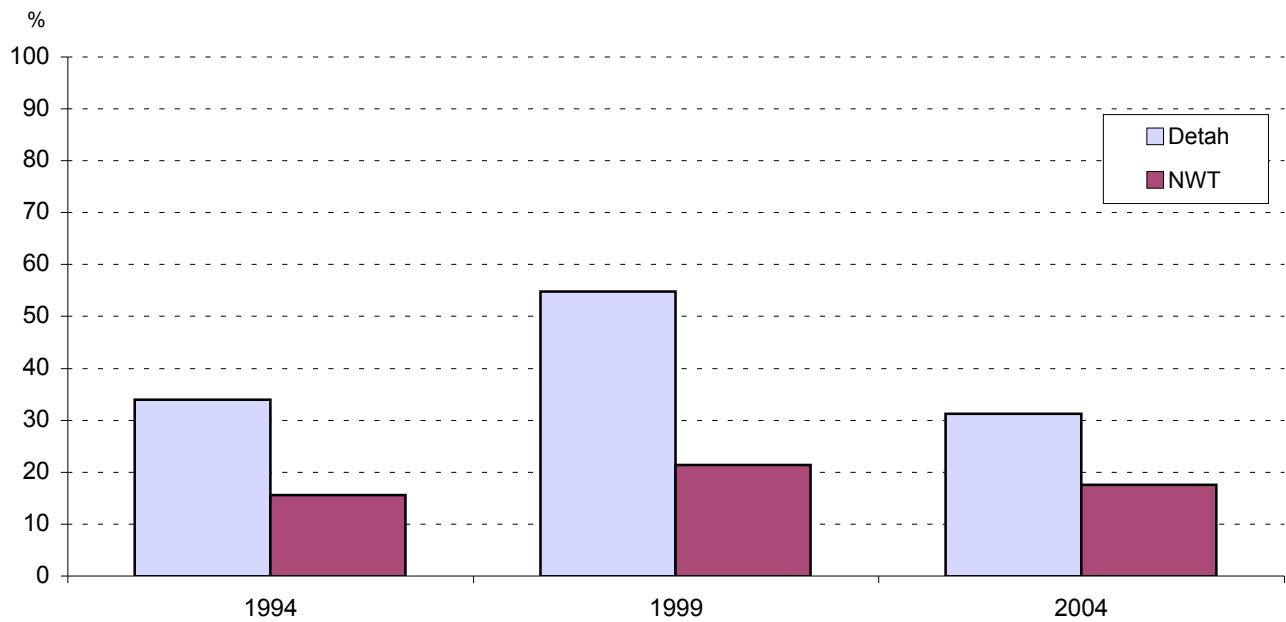
19. Percent of Aboriginal People 15 Years and Over Able to Speak an Aboriginal Language Detah and NWT, 1984 – 2004



Note: Canadian data are not available

Source: 1984, 1989, 1994 and 1999 - NWT Labour Force Survey; 2004 - NWT Community Survey

20. Use of Harvested Meat and Fish* Detah and NWT, 1994, 1999 and 2004



*Percentage of households reporting that most or all of the meat or fish consumed is harvested in the NWT

Note: Canadian data are not available

Source: 1994 and 1999 - NWT Labour Force Survey; 2004 - NWT Community Survey