

# 2007 NWT Social Indicators

## - Hay River Reserve -

This document represents the results of a GNWT inter-departmental working group to identify a set of social indicators that could be used to describe and monitor social conditions in NWT communities. The data provided on the following pages presents the information for these indicators for Hay River Reserve, the NWT and Canada when ever possible.

List of social indicators:

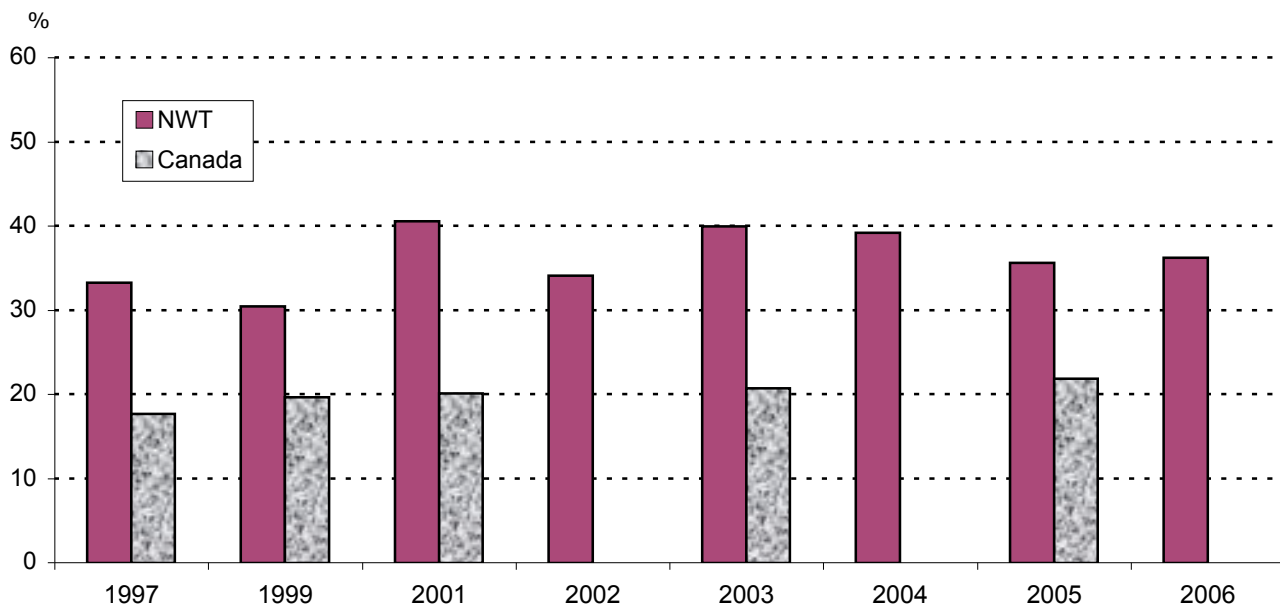
1. Incidence of Heavy Alcohol Use
2. Death Rates From Accidents, Suicides and Homicides
3. Sexually Transmitted Infection Rate (3 Year Average)
4. Percent of Population 15 Years and Older with at Least High School
5. High School Graduation Rate
  
6. Violent Crime Rate by Detachment
7. a) Rate of Juvenile Crime by Detachment (Males, 3 Year Average)  
b) Rate of Juvenile Crime by Detachment (Females, 3 Year Average)
8. NWT Shelter Admissions
9. Percent of Households in Core Housing Need
10. Percent of Households with 6 or More Persons
  
11. Percent of Lone Parent Families
12. Children Living in Low Income
13. Child Protection Investigations
14. a) Population Dependency Ratio (Less than 15 Years of Age)  
b) Population Dependency Ratio (60 Years of Age and Over)
15. Population Mobility
  
16. Average Employment Income
17. a) Percentage of Families with Income Less Than \$30,000  
b) Percentage of Families with Income Greater Than \$75,000
18. Employment Rate
19. Percent of Aboriginal People 15 Years and Over Able to Speak an Aboriginal Language
20. Use of Harvested Meat and Fish

These indicators will be maintained and published on an annual basis, and are available to all user groups to use in developing and delivering social programs within Hay River Reserve. The indicators presented here represent only part of the information available for Hay River Reserve. Other data can be found on the Bureau of Statistics website at [www.stats.gov.nt.ca](http://www.stats.gov.nt.ca)

If you have any comments or questions regarding either the social indicators presented here, or any other data for your community, contact:

Carmelita Hiebert  
Statistics Administrator  
NWT Bureau of Statistics  
(867) 873-7147  
Fax: (867) 873-0275

## 1. Incidence of Heavy Alcohol Use\* NWT and Canada, 1997 – 2006



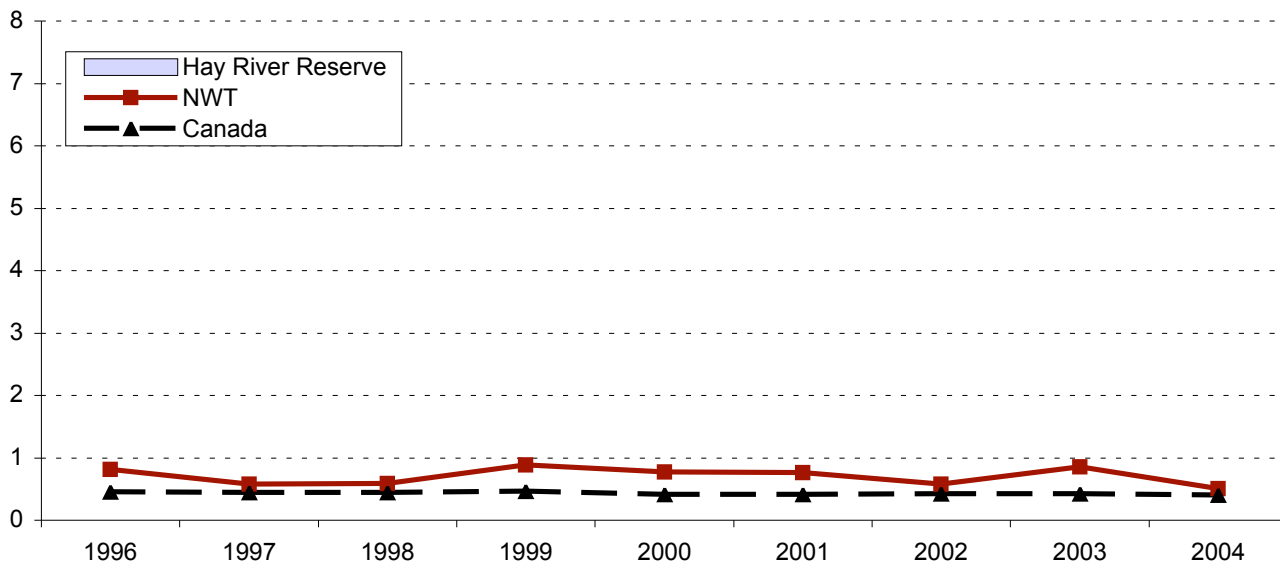
\*Percentage of persons 12 years of age and over who drink 5 or more drinks per occasion more than once a month

Note: Community rates are not available

Source: Statistics Canada

## 2. Death Rate from Accidents, Suicides and Homicides Hay River Reserve, NWT and Canada, 1996 – 2004

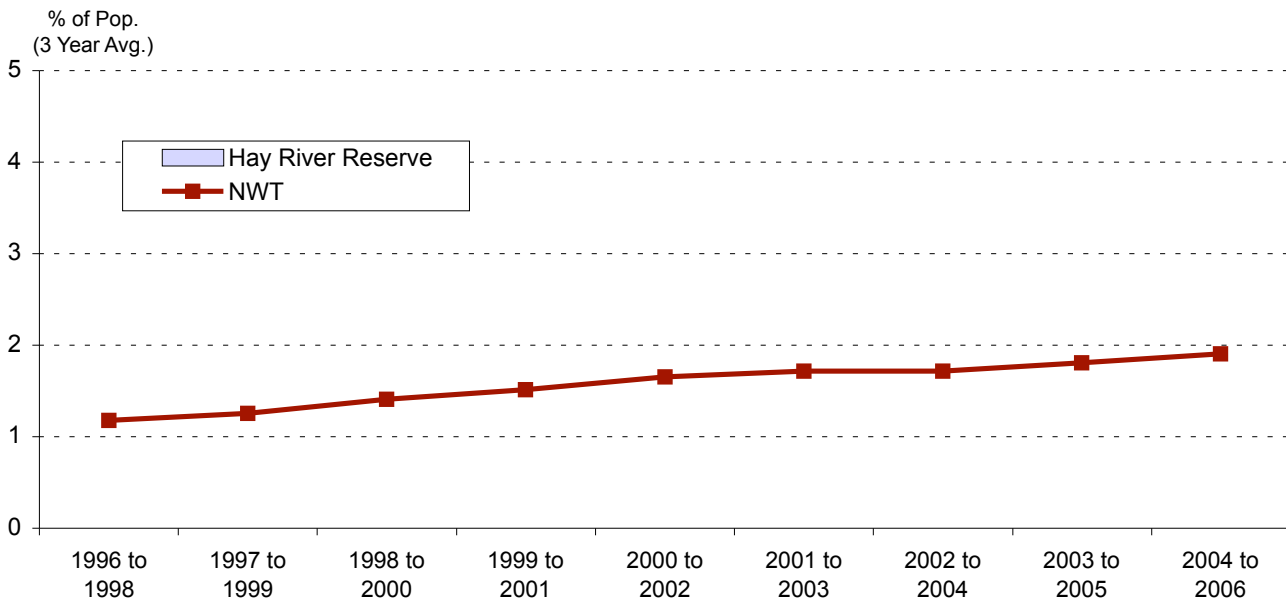
Per 1,000 Pop.



Note: Hay River Reserve rates during 1996 to 2004 are 0

Source: Statistics Canada

### 3. Sexually Transmitted Infection Rate (3 Year Average)\* Hay River Reserve and NWT, 1996-98 – 2004-06

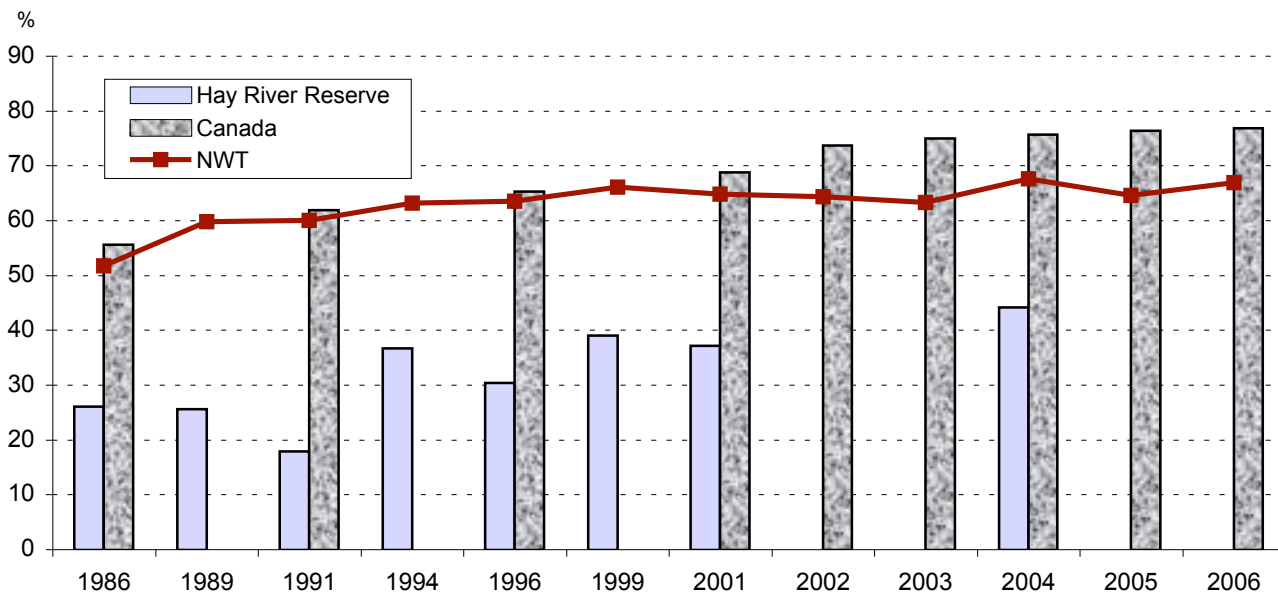


\*Reported cases of chlamydia and gonorrhoea per 100 population

Note: Hay River Reserve rates during 1996 to 2004 are 0; Canadian data are not available

Source: NWT Health & Social Services

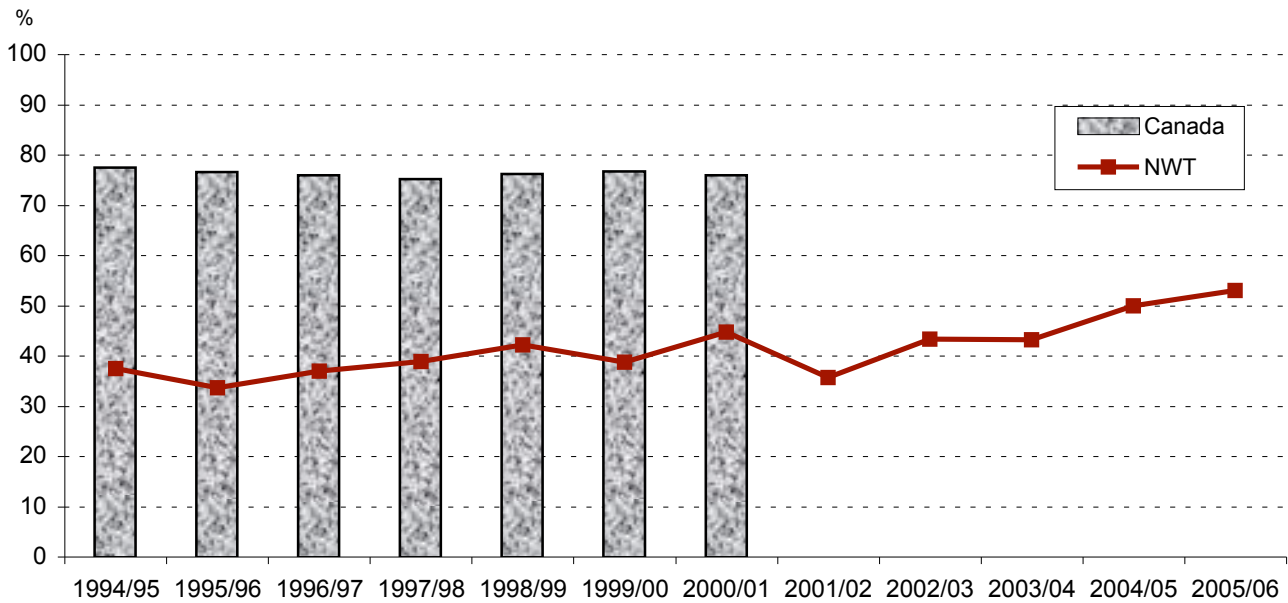
### 4. Percent of Population 15 Years and Older with at Least High School Hay River Reserve, NWT and Canada, 1986 – 2006



Note: Canadian data are not available for 1989, 1994, 1999 and 2004

Source: 1989, 1994 and 1999 - NWT Labour Force Survey; 2004 - NWT Community Survey; 1991, 1996 and 2001 - Census; 2002, 2003 2005 & 2006 annual LFS

## 5. High School Graduation Rate\* NWT and Canada, 1994/95 – 2005/06

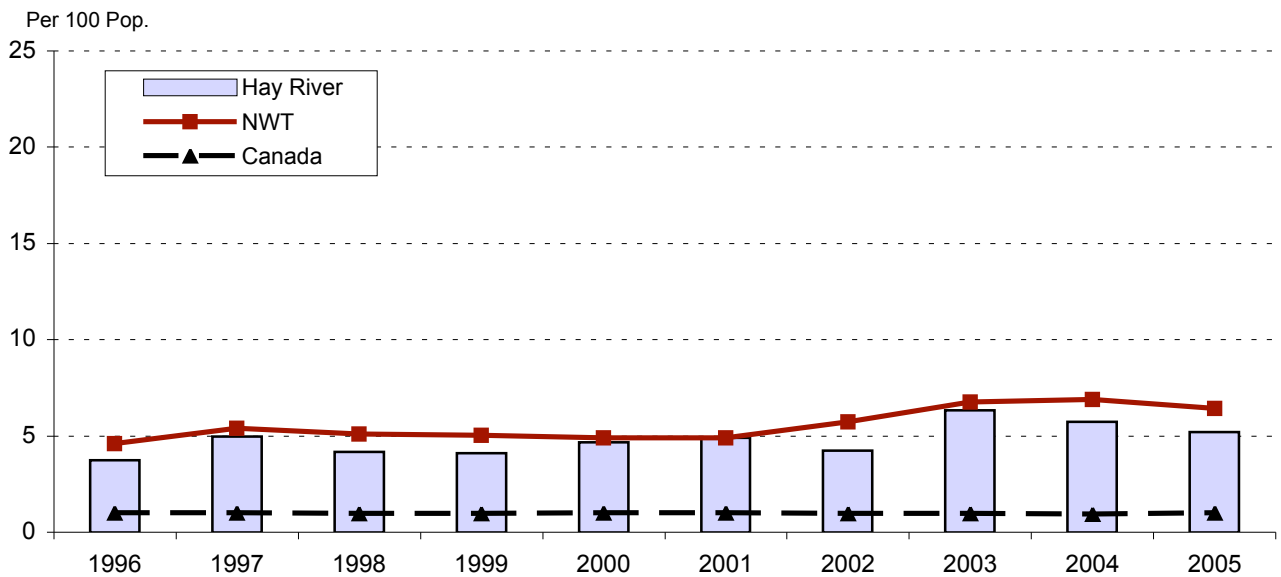


\*High school graduates as a percentage of persons 18 years of age

Note: Community data are not available; 2000/01 last data available for Canada

Source: NWT data – NWT Education, Culture & Employment; Canadian data – Statistics Canada

## 6. Violent Crime Rate by Detachment\* Hay River\*\*, NWT and Canada, 1996 – 2006



\*Number of reported violent crimes per 100 population.

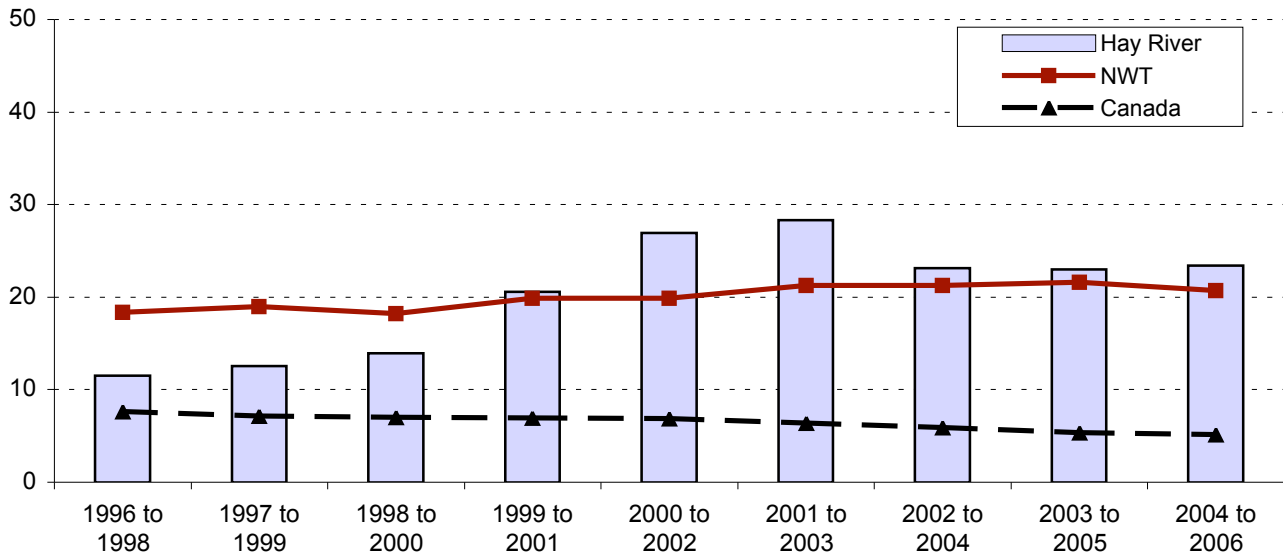
\*\* Crime for Hay River Reserve is based out of the Hay River detachment

Note: Incidents in a particular detachment may include incidents from surrounding communities

Source: Statistics Canada.

**7a. Rate of Juvenile Crime by Detachment (Males, 3 Year Average)\*  
Hay River\*\*, NWT and Canada, 1996-98 – 2004-06**

Per 100 Male Youths.



\*Number of male youths (between 12 and 17 years of age) charged with a crime per 100 male youth

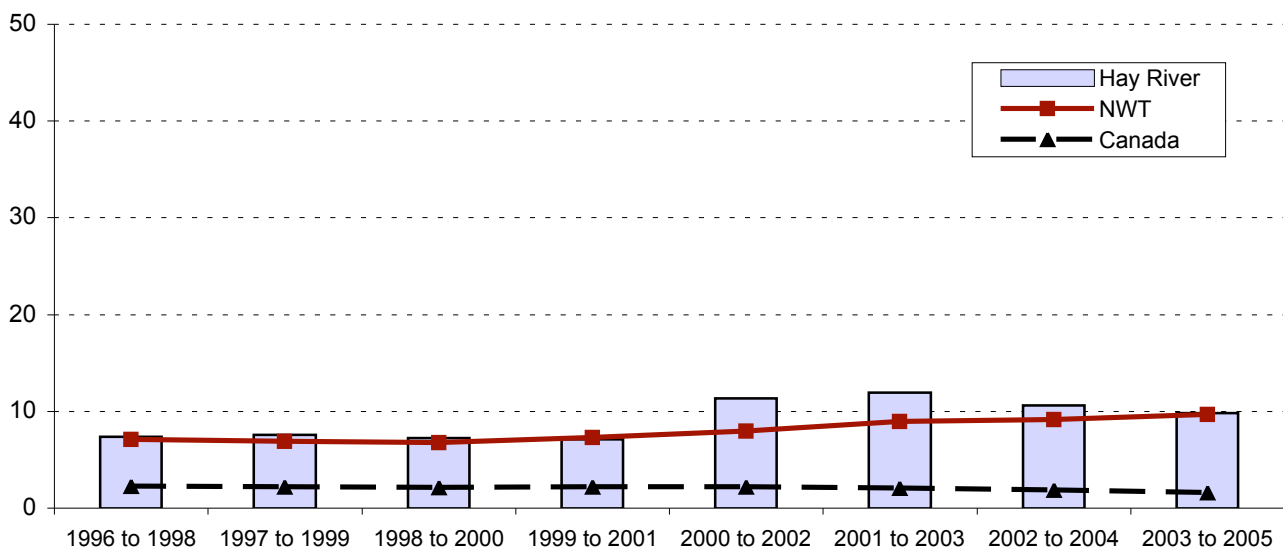
\*\* Crime for Hay River Reserve is based out of the Hay River detachment

Note: Incidents in a particular detachment may include incidents from surrounding communities

Source: Statistics Canada

**7b. Rate of Juvenile Crime by Detachment (Females, 3 Year Average)\*  
Hay River\*\*, NWT and Canada, 1996-98 – 2004-06**

Per 100 Female Youths



\*Number of female youths (between 12 and 17 years of age) charged with a crime per 100 female youth

\*\* Crime for Hay River Reserve is based out of the Hay River detachment

Note: Incidents in a particular detachment may include incidents from surrounding communities

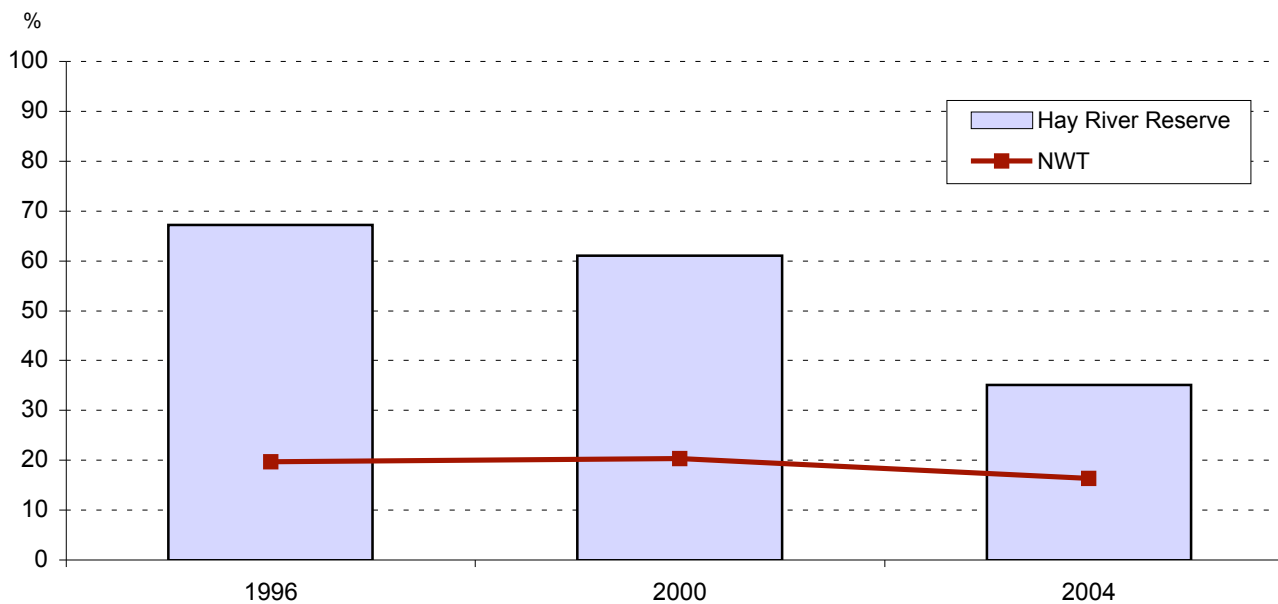
Source: Statistics Canada

## 8. NWT Shelter Admissions\* Women and Children, 1999/00 – 2005/06



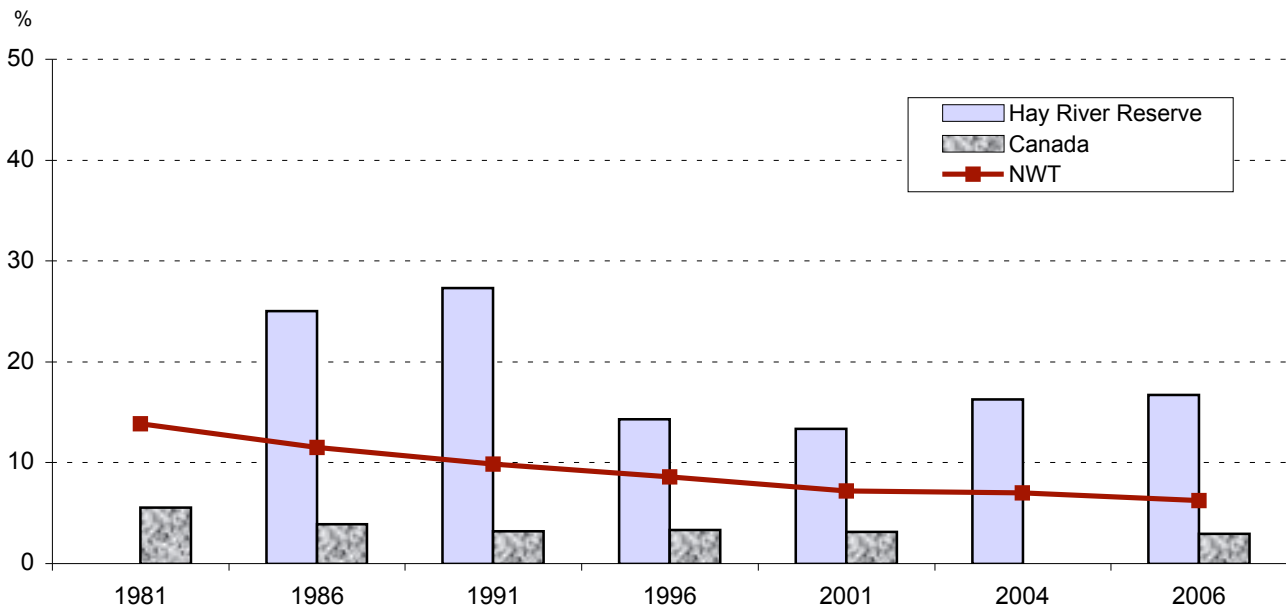
\*Number of Women and Children admitted to shelters  
 Note: Canadian and community data are not available  
 Source: NWT Health & Social Services

## 9. Percent of Households in Core Housing Need\* Hay River Reserve and NWT, 1996, 2000 and 2004



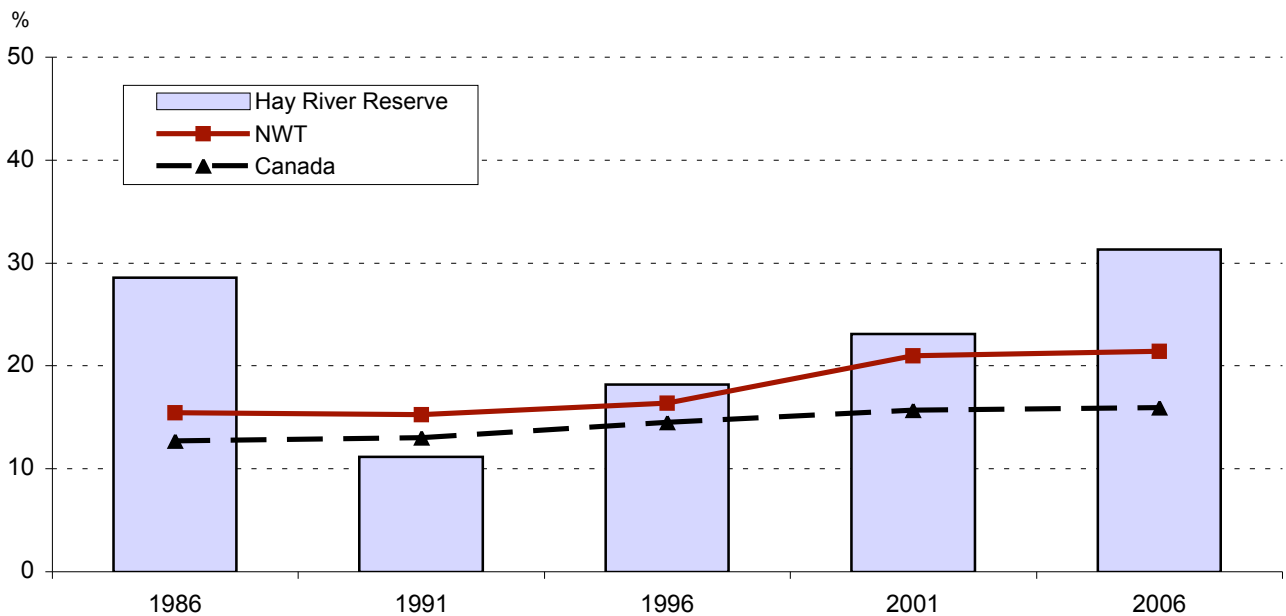
\*Core housing need refers to a household that has a housing problem of suitability, adequacy or affordability and does not have the income necessary to correct the problem  
 Note: Canadian data are not available  
 Source: 1996 and 2000 - NWT Housing Needs Survey; 2004 – NWT Community Survey

### 10. Percent of Households with 6 or More Persons Hay River Reserve, NWT and Canada, 1981 – 2006



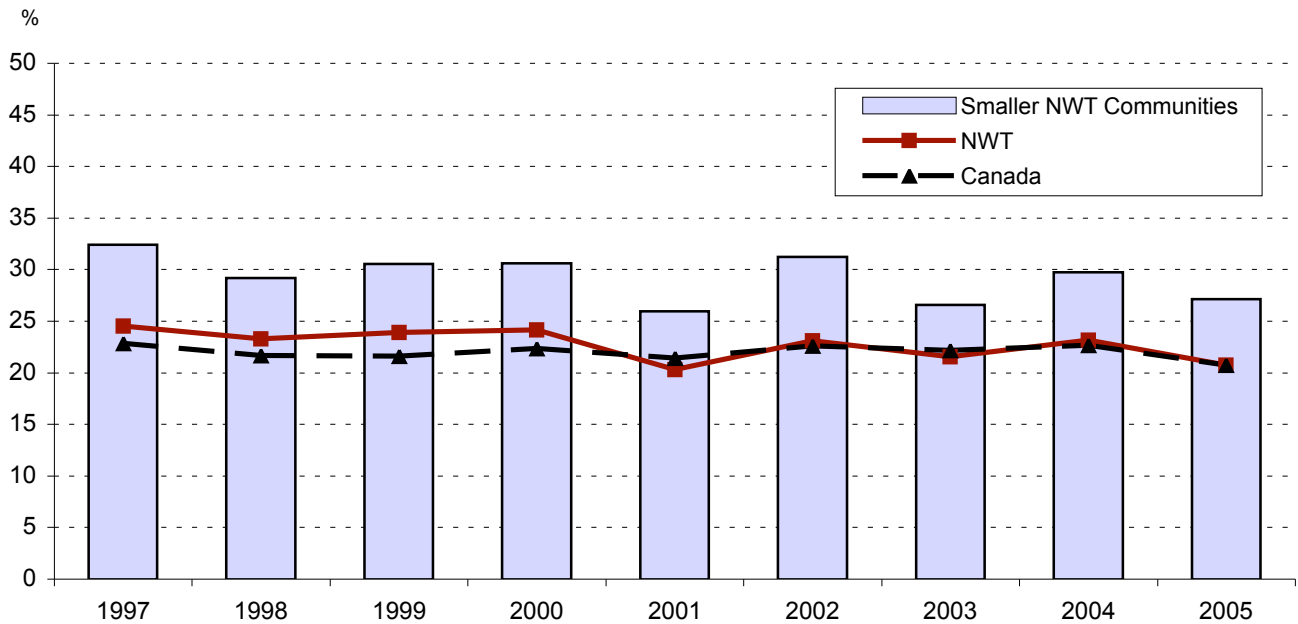
Note: Hay River Reserve data for 1981 is not available; Canadian data are not available for 2004  
 Source: 1981, 1986, 1991, 1996 and 2001 – Census; 2004 – NWT Community Survey

### 11. Percentage Lone Parent Families Hay River Reserve, NWT and Canada, 1986 – 2006



Source: Census

## 12. Children Living in Low Income\* Smaller NWT Communities\*\*, NWT and Canada, 1997 – 2005

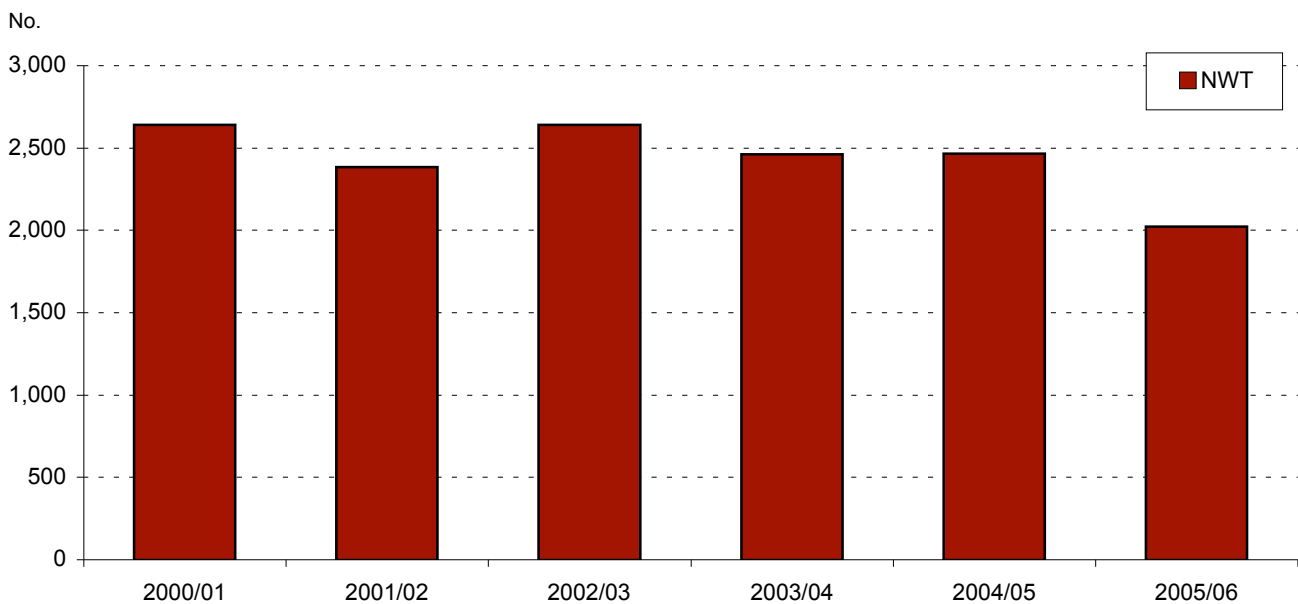


\* Percentage of children living in families with income below the after-tax low-income measure

\*\*Hay River Reserve data is not available; Smaller NWT communities are defined as all NWT communities with a population 700 or less

Source: Statistics Canada

## 13. Child Protection Investigations\* NWT, 2000/01 – 2005/06



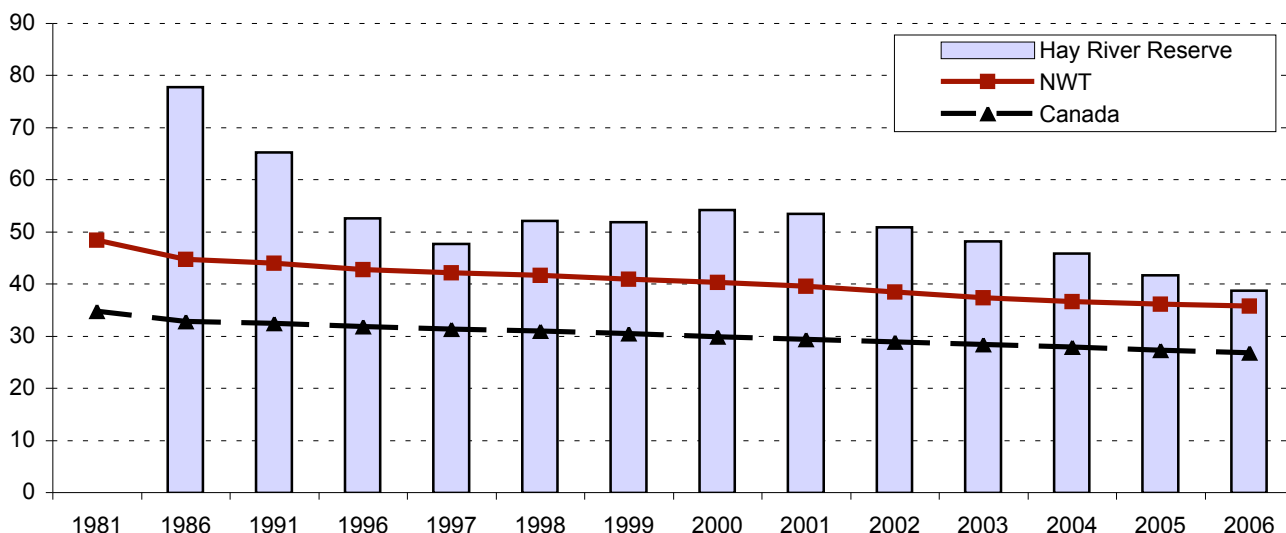
\*Number of screening reports; prior to 2002/03 a screening report may not have led to an investigation, that year a procedural change was made so that all screening reports are investigated

Note: Canadian and community level data are not available

Source: NWT Health & Social Services

### 14a. Population Dependency Ratio (Less than 15 Years of Age)\* Hay River Reserve, NWT and Canada, 1981 – 2006

No. people < 15 years per 100  
people between 15 & 59 years



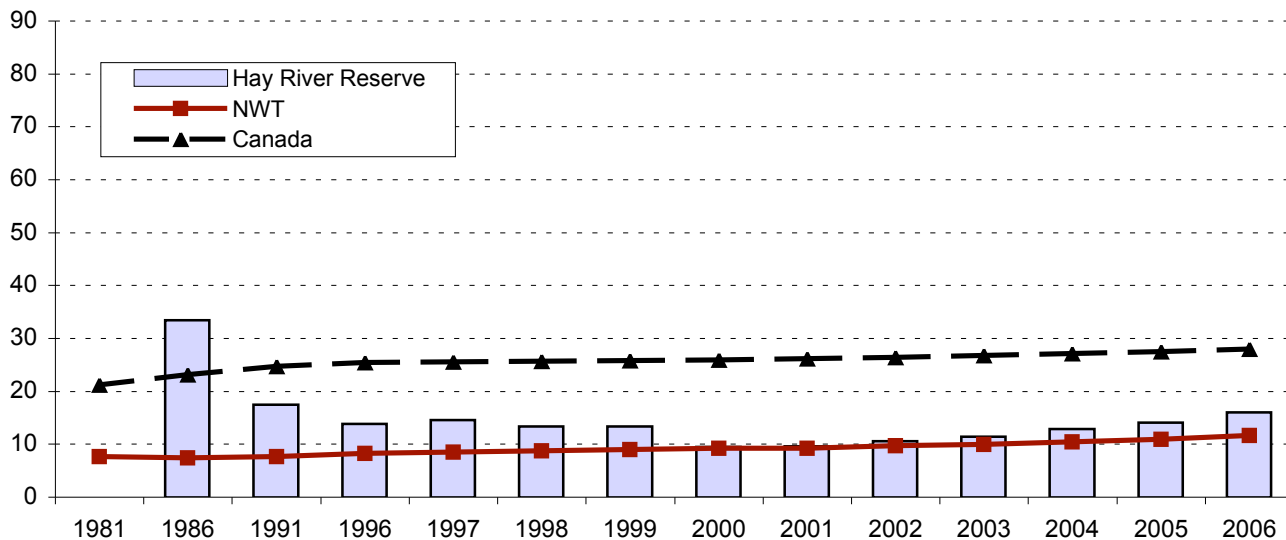
\* Number of people less than 15 years old for every 100 people between the ages of 15 and 59

Note: Hay River Reserve data for 1981 is not available

Source: Canadian rates – Statistics Canada; NWT and community rates: NWT Bureau of Statistics (except 1981, 1986 and 1991 – Statistics Canada)

### 14b. Population Dependency Ratio (60 Years of Age and Over)\* Hay River Reserve, NWT and Canada, 1981 – 2006

No. people > 59 years per 100  
people between 15 & 59 years

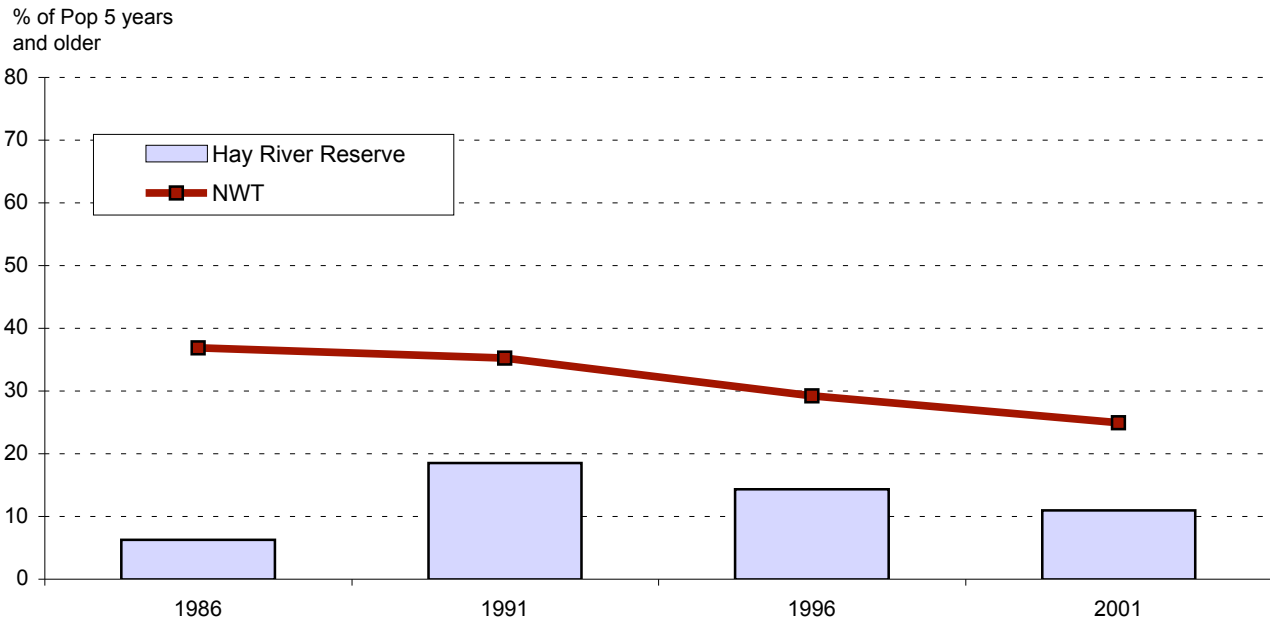


\* Number of people 60 years and older for every 100 people between the ages of 15 and 59

Note: Hay River Reserve data for 1981 is not available

Source: Canadian rates – Statistics Canada; NWT and community rates: NWT Bureau of Statistics (except 1981, 1986 and 1991 – Statistics Canada)

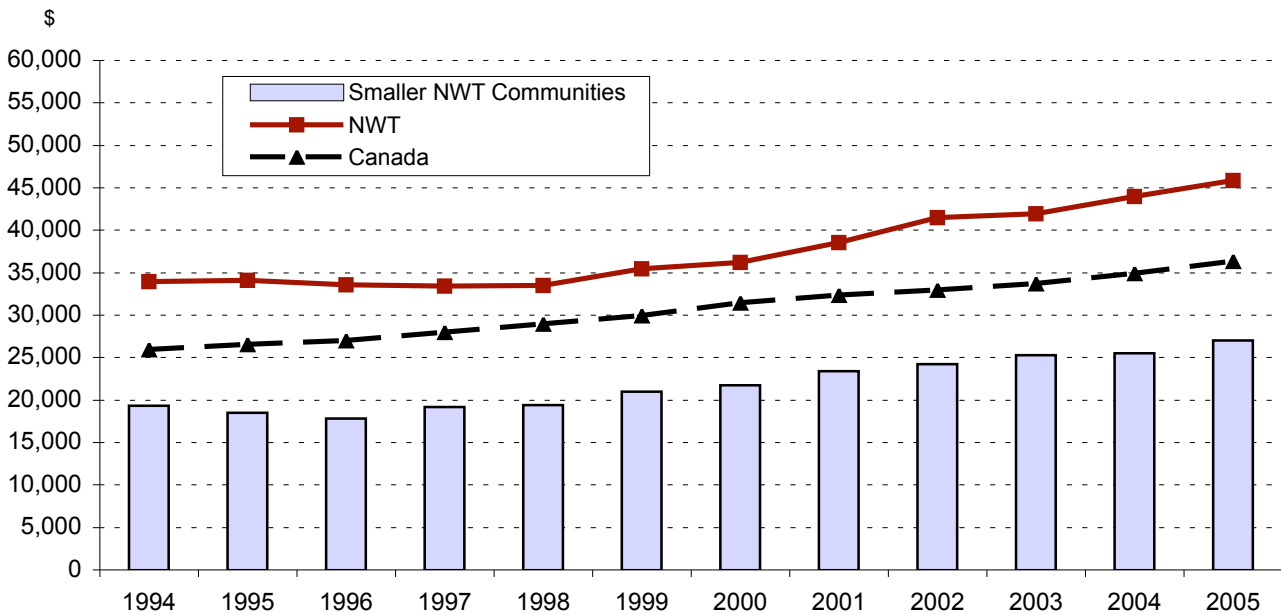
### 15. Population Mobility\* Hay River Reserve and NWT, 5 Year Mobility Rate – 1986 to 2001



\*Hay River Reserve mobility is the percent of Hay River Reserve's population 5 years and older who didn't live in the community 5 years earlier; NWT mobility is the percent of NWT's population 5 years and older who didn't live in their current community 5 years earlier

Source: Census

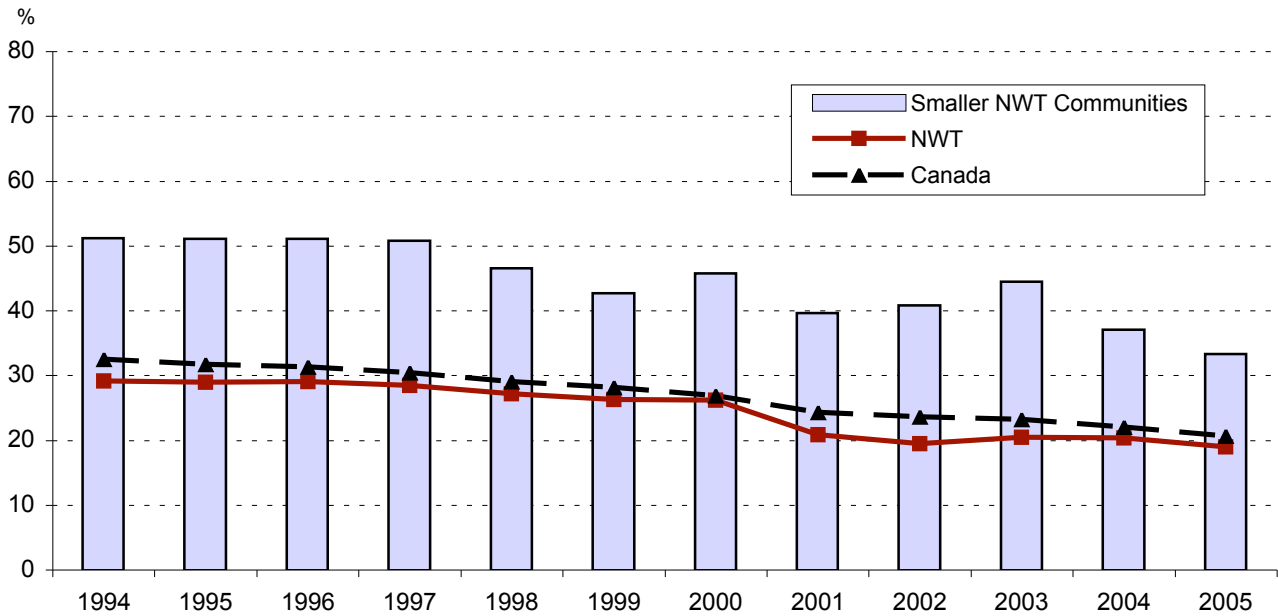
### 16. Average Employment Income Smaller NWT Communities\*, NWT and Canada, 1994 – 2005



\* Hay River Reserve Data is not available; Smaller NWT communities are defined as all NWT communities with a population 700 or less

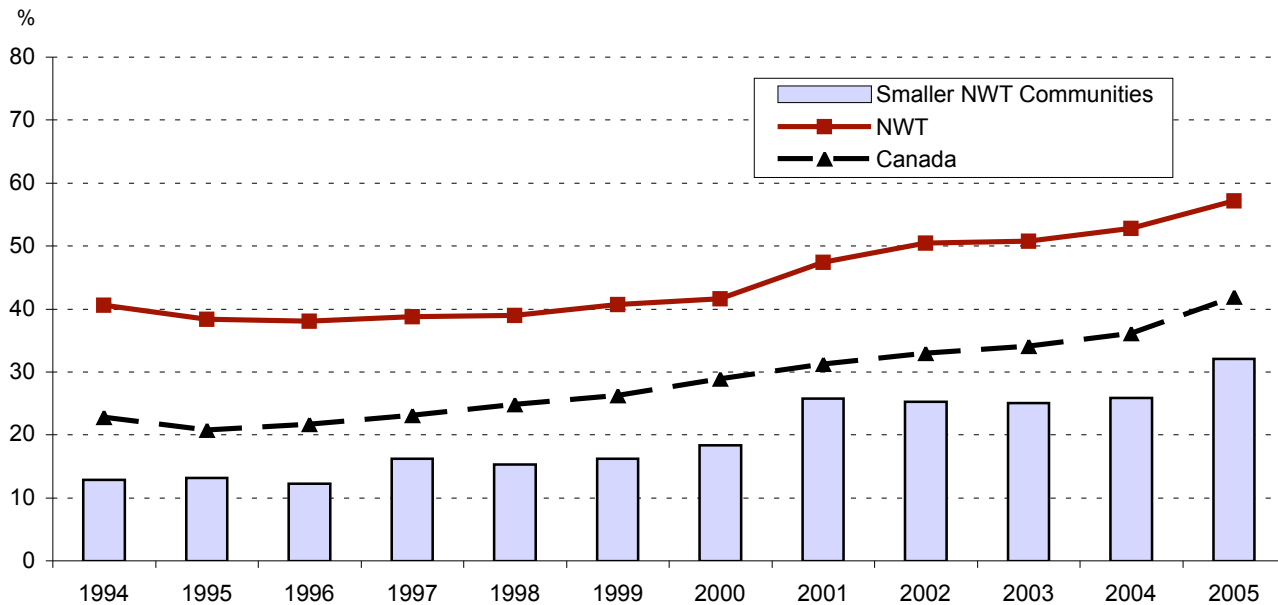
Source: Statistics Canada

**17a. Percentage of Families with Income Less Than \$30,000  
Smaller NWT Communities\*, NWT and Canada, 1994 – 2005**



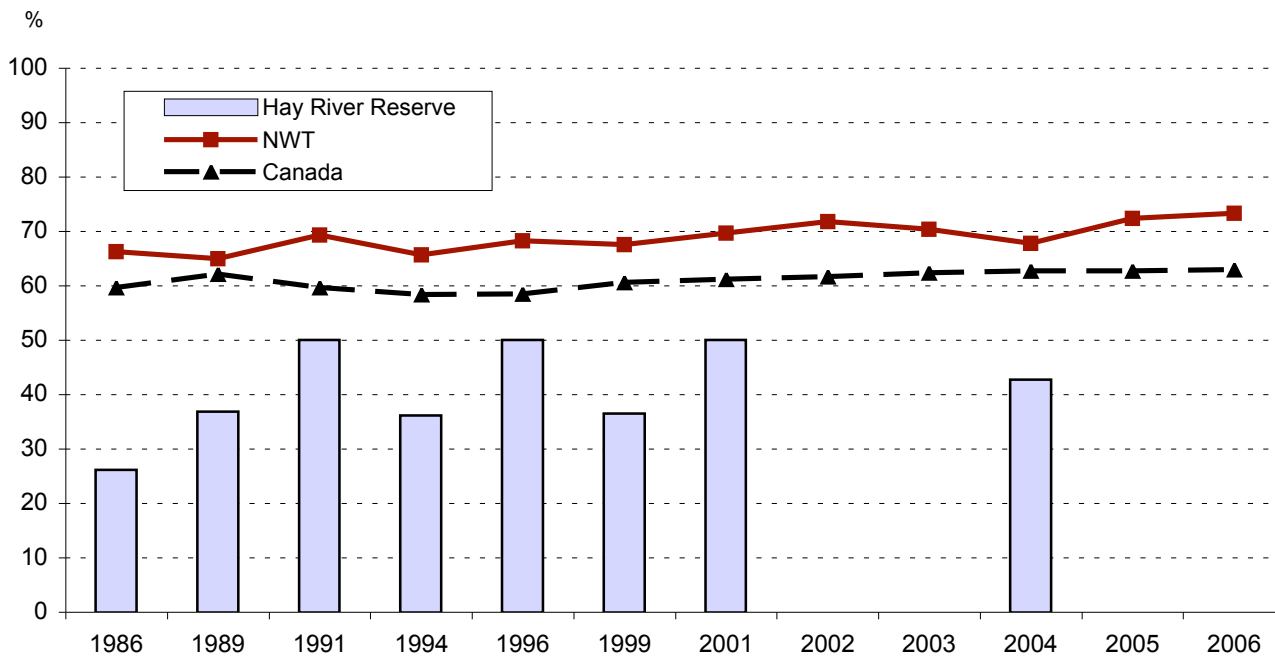
\* Hay River Reserve Data is not available; Smaller NWT communities are defined as all NWT communities with a population 700 or less  
Source: Statistics Canada

**17b. Percentage of Families with Income Greater Than \$75,000  
Smaller NWT Communities\*, NWT and Canada, 1994 – 2005**



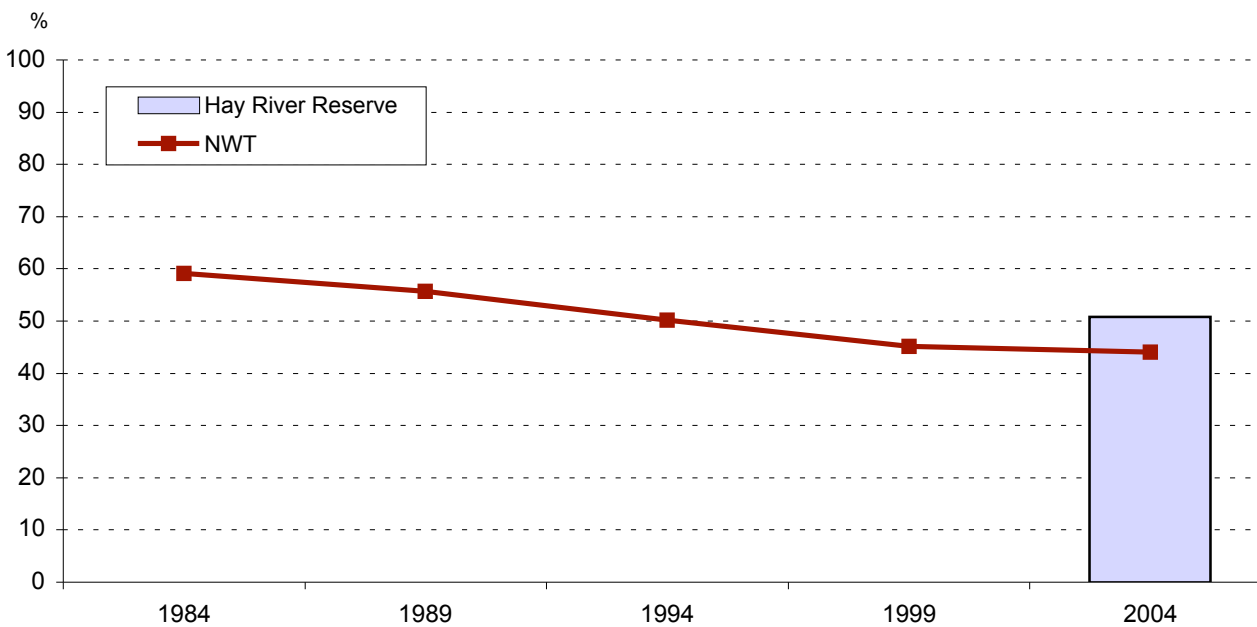
\* Hay River Reserve Data is not available; Smaller NWT communities are defined as all NWT communities with a population 700 or less  
Source: Statistics Canada

### 18. Employment Rate Hay River Reserve, NWT and Canada, 1986 – 2006



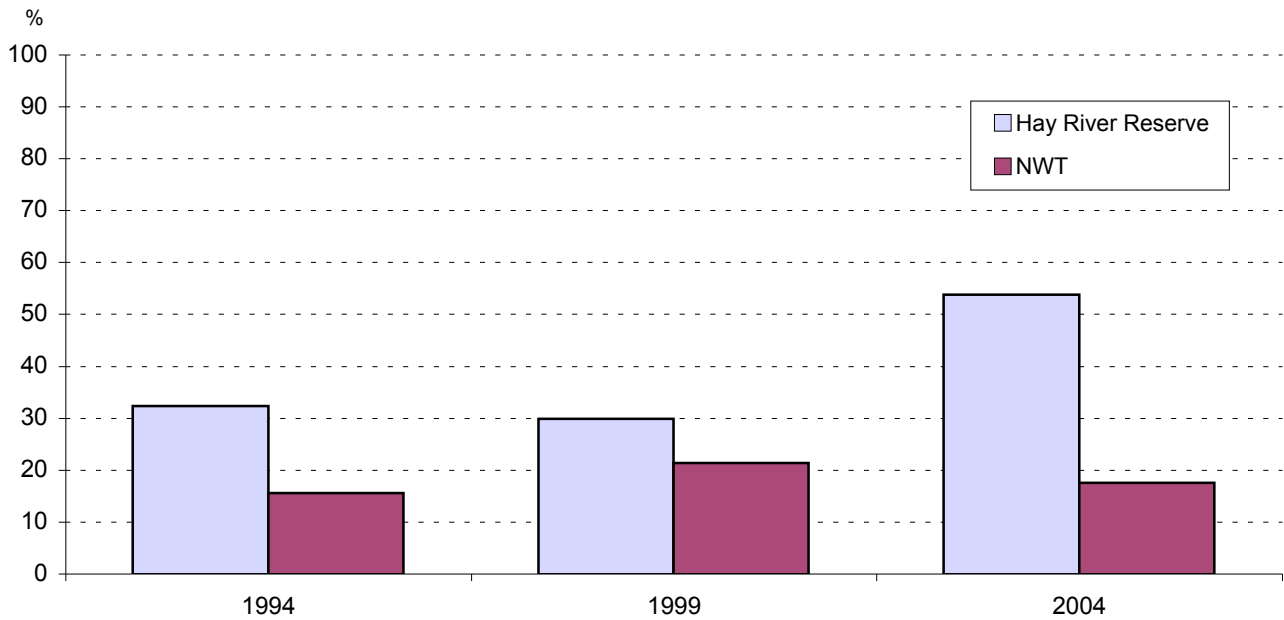
Source: Statistics Canada (except NWT and community data for 1989, 1994, and 1999 - NWT Labour Force Survey; 2004 - NWT Community Survey)

### 19. Percent of Aboriginal People 15 Years and Over Able to Speak an Aboriginal Language Hay River Reserve and NWT, 1984 – 2004



Note: Hay River Reserve data is not available during 1984 to 1999; Canadian data are not available  
Source: 1984, 1989, 1994 and 1999 - NWT Labour Force Survey; 2004 - NWT Community Survey

## 20. Use of Harvested Meat and Fish\* Hay River Reserve and NWT, 1994, 1999 and 2004



\*Percentage of households reporting that most or all of the meat or fish consumed is harvested in the NWT

Note: Canadian data are not available

Source: 1994 and 1999 - NWT Labour Force Survey; 2004 - NWT Community Survey